

SERIES 160FW

WIRELESS STRAIGHT PITOT TUBES

Wireless, Measures Differential Pressure, Air Velocity and Flow



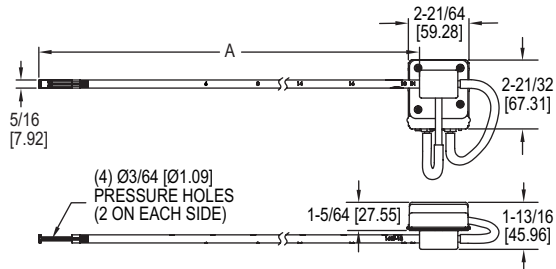
Series 160FW Wireless Pitot Tubes are designed to meet the need of the environmental field testing and is an accurate and reliable way to measure the flow of air or gas streams. Combined with the universal handheld and UHH gateway, the 160FW wireless capability allow users to read velocity directly on the handheld in the Mobile Meter® App. This universal pitot tube can also be used to take duct traverses when used with Dwyer's TraverselT™ App. Data can be logged and sent via email for later reporting.

FEATURES/BENEFITS

- Compatible with Dwyer's Mobile Meter® and TraverselT™ applications
- Stable 50' (15 m) wireless range
- Straight design allows for easy insertion into ducts
- Permanent stamped insertion depth graduations facilitate accurate positioning
- Alignment indicator helps keep tip parallel to flow

APPLICATIONS

- Monitor or control air velocity or air flow where hook style pitot tubes don't allow access
- Building commissioning
- Building HVAC test and balance



DIMENSIONS	
Model	Dimension "A" in (mm)
160FW-18	19-9/32 (489.56)
160FW-24	25-9/32 (642.14)
160FW-36	37-9/32 (946.94)
160FW-48	49-9/32 (1251.74)
160FW-60	61-9/32 (1556.54)

SPECIFICATIONS

Wetted Material: 304 SS.

Accuracy: ±0.5% FS span @ 25°C (includes non linearity, hysteresis, and non repeatability).

Pressure Limit: ±2 in w.c. (±500 Pa).

Compensated Temperature Limits: 32 to 140°F (0 to 60°C).

Pitot Tube Range: 0 to 9000 FPM (45 m/s).

Pitot Tube K-Factor: 0.81.

Process Temperature Limit: 1500°F (815°C).

Process Connections: 1/4" OD.

Weight: 2 lb (0.91 kg) (weight varies depending on pitot tube length).

MODEL CHART

Model	Description
160FW-18	18" wireless straight stainless steel pitot tube
160FW-24	24" wireless straight stainless steel pitot tube
160FW-36	36" wireless straight stainless steel pitot tube
160FW-48	48" wireless straight stainless steel pitot tube
160FW-60	60" wireless straight stainless steel pitot tube