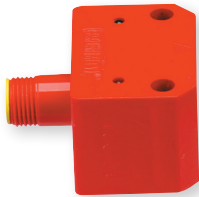


VALVE POSITION SENSOR

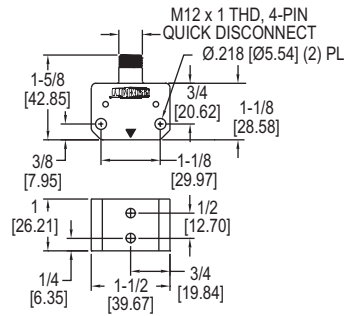
Dual Inductive, 2-Wire AC/DC Sensor, Fully Adjustable Target in 2° Increments



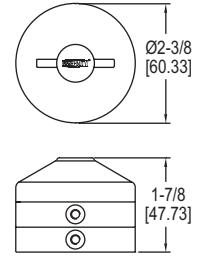
VPS2411



P1



VPS2411

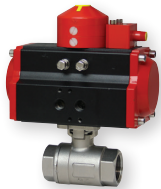


P1

The dual inductive, 2-wire AC/DC **SERIES VPS** Valve Position Sensor maintains VDI/VDE 3845 dimensions so positioners can be easily mounted on top of the sensor and target. The Model VPS2411 Sensor and Model P1 Target mount easily and directly to actuators with ISO NAMUR topworks (see picture below). Solid state components are fully embedded in an epoxy resin to prevent condensation build-up and to protect against vibration and shock. The rugged PBTP housing provides excellent corrosion resistance and moisture protection.

FEATURES/BENEFITS

- Fully adjustable target in 2° increments
- LED indication for visual indication
- 4-pin quick disconnect electrical connection



Model VPS and P1 mounted on an actuator

SPECIFICATIONS

Temperature Limits: -13 to 176°F (-25 to 80°C).
Power Requirements: 20 to 140 VAC (50/60 Hz), 10 to 200 VDC.
Enclosure Material: Polybutylene terephthalate.
Switch Type: Dual NO.
Electrical Rating: 200 mA.
Minimum Load Current: 5 mA.
Leakage Current: 0.8 mA.
Voltage Drop: 5.0 V.
Repeatability: 0.01 mm.
Hysteresis: 3 to 15% of sensing range.
Switching Frequency: 25 Hz.
Mounting Holes: NAMUR mounting - 3.15" x 1.18" (80 x 30 mm) or 5.118" x 1.18" (130 x 30 mm).
Electrical Connection: 4-pin quick disconnect.

MODEL CHART

Model	Description	Price
VPS2411	Valve position sensor	\$140.00
P1	Valve position target	32.50
VIP82	Quick disconnect cable	27.25