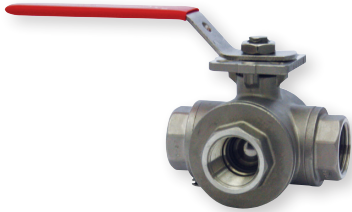
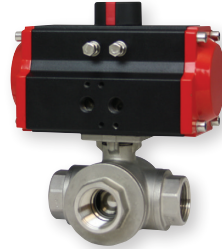


3-WAY NPT BRASS BALL VALVE

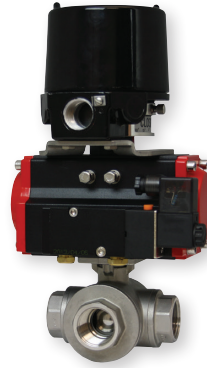
Full Port, Electric or Pneumatic Actuators



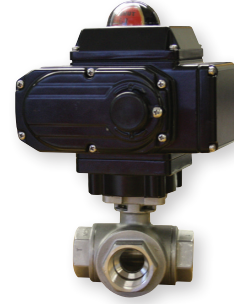
WE35-DHD00-T1



WE35-DDA02-L1



WE35-DDA02-T1-AA01



WE35-DTD01-T3-A

The **SERIES WE35** incorporates a full port 3-way brass ball valve for great flow rates with minimal pressure drop. The valve features a blowout proof stem for added safety, reinforced PTFE seats and seals for longer life, and a brass ball for better performance. Actuators are direct mounted creating a compact assembly for tight spaces.

The Series WE35 can be configured with either an electric or pneumatic actuator. Electric actuators are available in weatherproof or explosion-proof, a variety of supply voltages, and two-position or modulating control. Two-position actuators use the supply voltage to drive the valve open or closed, while the modulating actuator accepts a 4 to 20 mA input for valve positioning. Actuators feature thermal overload protection and permanently lubricated gear train.

The pneumatic double acting actuator uses an air supply to drive the valve open and closed. The actuator has two supply ports, with one driving the valve open and the other driving the valve closed. Spring return pneumatic actuators use the air supply to open the valve and internally loaded springs return the valve to the closed position. Also available is the SN solenoid valve to electrically switch the air supply pressure between the air supply ports for opening and closing the valve. Actuators are constructed of anodized and epoxy coated aluminum for years of corrosion free service.

FEATURES/BENEFITS

- Capable of being configured to fit any application
- Limit switches can be mounted to manual valves for remote monitoring
- Weatherproof or explosion-proof electric actuators
- Double acting or spring return anodized aluminum pneumatic actuators
- Full port design reduces the pressure drop across the valve

APPLICATIONS

- Gas or liquid flow control
- Ideal for quick bubble tight shut-off
- Mixing or diverting liquids and gases

SPECIFICATIONS

VALVE

Service: Compatible liquids and gases.

Body: 3-way.

Line Sizes: 1/2 to 2".

End Connections: Female NPT.

Pressure Limits: 600 psi (41 bar) WOG.

Wetted Materials: Body, ball, and stem: Brass; Seat, seal, and packing: PTFE.

Temperature Limits: -20 to 425°F (-30 to 220°C).

Other Materials: O-ring: NBR; Handle, stem nut, ferrule: SS; Handle Sleeve: Vinyl; Body and cap: Nickel plated.

Agency Approvals: Meets the technical requirements of EU Directive 2011/65/EU (RoHS II).

ACTUATORS

Pneumatic "DA" and "SR" Series

Type: DA series is a double acting and SR series is a spring return (rack and pinion).

Normal Supply Pressure: DA: 40 to 115 psi (2.7 to 7.9 bar); SR: 80 psi (5.5 bar)

Maximum Supply Pressure: 120 psi (8.6 bar).

Air Connections: DA02 to DA03: 1/4" female NPT; SR02 to SR04: 1/4" female NPT.

Housing Material: Anodized aluminum body and epoxy coated aluminum end caps.

Temperature Limits: -40 to 176°F (-40 to 80°C).

Accessory Mounting: NAMUR standard.

Electric "TD" and "MD" Series

Power Requirements: 110 VAC, 220 VAC, 24 VAC, or 24 VDC (MD models not available in 24 VDC).

Power Consumption: See instruction manual.

Cycle Time (per 90°): TD01: 4 s; MD01: 10 s; TD02: 20 s).

Duty Rating: 85%.

Enclosure Rating: NEMA 4X (IP67).

Housing Material: Powder coated aluminum.

Temperature Limits: -22 to 140°F (-30 to 60°C).

Electrical Connection: 1/2" female NPT.

Modulating Input: 4 to 20 mA.

Standard Features: Manual override, position indicator, and TD models come with two limit switches.

Electric "TI" and "MI" Series

Power Requirements: 110 VAC, 220 VAC, 24 VAC, 24 VDC.

Power Consumption: See instruction manual.

Cycle Time (per 90°): See instruction manual.

Duty Rating: See instruction manual.

Enclosure Rating: NEMA 7, designed to meet hazardous locations: Class I, Group C & D; Class II, Group E, F & G; Division I & II.

Housing Material: Powder coated aluminum.

Temperature Limits: -40 to 140°F (-40 to 60°C).

Electrical Connection: 1/2" female NPT.

Modulating Input: 4 to 20 mA.

Standard Features: Position indicator and two limit switches.

3-WAY NPT BRASS BALL VALVE

Full Port, Electric or Pneumatic Actuators

MODEL CHART											
Size	Cv (gal/min)	Popular Hand Operated Model	Price	Popular Double Acting Pneumatic Model	Price	Popular Spring Return Pneumatic Model	Price	Popular NEMA 4X Two Position Electric (110 VAC) Model	Price	Popular NEMA 4X Modulating Electric (110 VAC) Model	Price
1/2"	13	WE35-CHD00-T1	\$44.50 [ⓑ]	WE35-CDA02-T2	\$188.00 [ⓑ]	WE35-CSR02-T2	\$205.00 [ⓑ]	WE35-CTD01-T2-A	\$430.00 [ⓑ]	WE35-CMD01-T2-A	\$913.75 [ⓑ]
3/4"	37	WE35-DHD00-T1	63.50 [ⓑ]	WE35-DDA02-T2	210.00 [ⓑ]	WE35-DSR02-T2	225.00 [ⓑ]	WE35-DTD01-T2-A	458.00 [ⓑ]	WE35-DMD01-T2-A	1000.00 [ⓑ]
1"	49	WE35-EHD00-T1	85.50 [ⓑ]	WE35-EDA02-T2	239.00 [ⓑ]	WE35-ESR03-T2	318.00 [ⓑ]	WE35-ETD01-T2-A	479.00 [ⓑ]	WE35-EMD01-T2-A	1086.25 [ⓑ]
1-1/4"	59	WE35-FHD00-T1	111.00 [ⓑ]	WE35-FDA03-T2	307.00 [ⓑ]	WE35-FSR03-T2	410.00 [ⓑ]	WE35-FTD01-T2-A	638.00 [ⓑ]	WE35-FMD01-T2-A	1172.75 [ⓑ]
1-1/2"	100	WE35-GHD00-T1	193.00 [ⓑ]	WE35-GDA03-T2	393.00 [ⓑ]	WE35-GSR03-T2	505.00 [ⓑ]	WE35-GTD01-T2-A	811.00 [ⓑ]	WE35-GMD01-T2-A	1475.00 [ⓑ]
2"	115	WE35-HHD00-T1	272.00 [ⓑ]	WE35-HDA03-T2	522.00 [ⓑ]	WE35-HSR04-T2	673.00 [ⓑ]	WE35-HTD02-T2-A	949.00 [ⓑ]	WE35-HMD02-T2-A	1604.50 [ⓑ]

[ⓑ] Items are subject to Schedule B discounts.

MODEL CHART - HAND OPERATED & PNEUMATIC ACTUATOR								
Example	WE35	-CSR02	-T1	-A	A	00	WE35-CSR02-AA00	Price
Series	WE35						Brass 2-piece NPT	-
Size and Range		CHD00					1/2" hand operated	\$44.50 [ⓑ]
		DHD00					3/4" hand operated	63.50 [ⓑ]
		EHD00					1" hand operated	85.50 [ⓑ]
		FHD00					1-1/4" hand operated	111.00 [ⓑ]
		GHD00					1-1/2" hand operated	193.00 [ⓑ]
		HHD00					2" hand operated	272.00 [ⓑ]
		CDA02					1/2" double acting	188.00 [ⓑ]
		DDA02					3/4" double acting	210.00 [ⓑ]
		EDA02					1" double acting	239.00 [ⓑ]
		FDA03					1-1/4" double acting	307.00 [ⓑ]
		GDA03					1-1/2" double acting	393.00 [ⓑ]
		HDA03					2" double acting	522.00 [ⓑ]
		CSR02					1/2" spring return	205.00 [ⓑ]
		DSR02					3/4" spring return	225.00 [ⓑ]
		ESR03					1" spring return	318.00 [ⓑ]
		FSR03					1-1/4" spring return	410.00 [ⓑ]
		GSR03					1-1/2" spring return	505.00 [ⓑ]
		HSR04					2" spring return	673.00 [ⓑ]
Valve Position			T1				Flow path A	-
			T2				Flow path B	-
			T3				Flow path C	-
			T4				Flow path D	-
			L1				Flow path E	-
Solenoid				N			No solenoid	-
				A			NEMA 4X NAMUR solenoid	+50.00 [ⓑ]
Solenoid Voltage					N		No solenoid	-
					A		110 VAC	-
					B		220 VAC	-
					C		24 VAC	-
					D		24 VDC	-
					E		12 VDC	-
Positioner and Switches						00	None	-
						01	42AD0 exp limit switch	+230.00 [ⓑ]
						02	45VD0 exp position transmitter	+525.00 [ⓑ]
						03	42AD0-B ATEX limit switch	+323.00 [ⓑ]
						04	42AD0-IE IECEX limit switch	+320.00 [ⓑ]
						06	QV-210101 poly limit switch	+143.00 [ⓑ]
						07	VPS and P1 prox switch	+176.00 [ⓑ]
						08	265ER-D5 positioner	+620.00 [ⓑ]
						09	285ER-D5 smart positioner	+1389.00 [ⓑ]

[ⓑ] Items are subject to Schedule B discounts.

MODEL CHART - ELECTRIC ACTUATOR						
Example	WE35	-GMD01	-T2	-A	WE35-GMD01-A	Price
Series	WE35				Brass 2-piece NPT	-
Size and Range		CTD01			1/2" electric two-position	\$380.00 [ⓑ]
		DTD01			3/4" electric two-position	408.00 [ⓑ]
		ETD01			1" electric two-position	429.00 [ⓑ]
		FTD01			1-1/4" electric two-position	588.00 [ⓑ]
		GTD01			1-1/2" electric two-position	761.00 [ⓑ]
		HTD02			2" electric two-position	899.00 [ⓑ]
		CMD01			1/2" electric modulating	863.75 [ⓑ]
		DMD01			3/4" electric modulating	950.00 [ⓑ]
		EMD01			1" electric modulating	1036.25 [ⓑ]
		FMD01			1-1/4" electric modulating	1122.75 [ⓑ]
		GMD01			1-1/2" electric modulating	1425.00 [ⓑ]
		HMD02			2" electric modulating	1554.50 [ⓑ]
		CTI01			1/2" exp electric two-position	691.00 [ⓑ]
		DTI01			3/4" exp electric two-position	899.00 [ⓑ]
		ETI02			1" exp electric two-position	1037.00 [ⓑ]
		FTI02			1-1/4" exp electric two-position	1244.00 [ⓑ]
		GTI02			1-1/2" exp electric two-position	1383.00 [ⓑ]
		HTI03			2" exp electric two-position	1521.00 [ⓑ]
		CMI01			1/2" exp electric two-position	1555.00 [ⓑ]
		DMI01			3/4" exp electric two-position	1641.50 [ⓑ]
		EMI02			1" exp electric two-position	1900.75 [ⓑ]
		FMI02			1-1/4" exp electric two-position	2160.00 [ⓑ]
		GMI02			1-1/2" exp electric two-position	2332.75 [ⓑ]
		HMI03			2" exp electric two-position	2419.00 [ⓑ]
Valve Position			T1		Flow path A	-
			T2		Flow path B	-
			T3		Flow path C	-
			T4		Flow path D	-
			L1		Flow path E	-
Actuator Voltage				A	110 VAC	-
				B	220 VAC	-
				C	24 VAC	+70.00 [ⓑ]
				D	24 VDC	+70.00 [ⓑ]

[ⓑ] Items are subject to Schedule B discounts.

ACCESSORIES		
Model	Description	Price
AFR4	Air filter regulator, 0 to 120 psi	\$67.00 [ⓑ]

[ⓑ] Items are subject to Schedule B discounts.