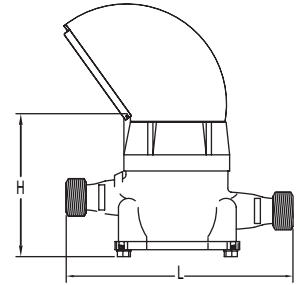
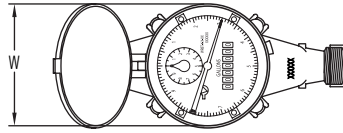


MULTI-JET WATER METER WITH REMOVABLE BOTTOM

Easy Clean Access, Lead Free



Size in (mm)	Spud NPSM (BSPP)	Length 'L' in (mm)	Width 'W' in (mm)	Height 'H' in (mm)	Weight lb (kg)
5/8 x 1/2 (15)	3/4" (3/4")	7-1/2 (190)	3-13/16 (97)	4-3/4 (121)	4.38 (1.99)
5/8 x 3/4	1" (1")	7-1/2 (190)	3-13/16 (97)	4-3/4 (121)	4.6 (2.09)
3/4 SL (20)	1" (1")	7-1/2 (190)	3-13/16 (97)	4-3/4 (121)	4.6 (2.09)
3/4 (20)	1" (1")	9 (229)	3-13/16 (97)	4-3/4 (121)	4.6 (2.09)
1 (25)	1" (1")	9 (229)	4-3/4 (111)	4-3/4 (111)	5.2 (2.34)
1-1/4 (32)	1-1/4" (1-1/4")	10-3/4 (273)	4-3/4 (111)	5-1/8 (130)	7.1 (3.22)
1-1/2 (40)	2" (2")	9-5/8 (245)	5-3/4 (146)	6-1/4 (159)	11.3 (5.13)
2 (50)	2-1/2" (2-1/2")	11-1/2 (292)	6 (152)	6-3/4 (171)	15 (6.80)

The **Series WRBT Multi-Jet Water Meter with Removable Bottom** is a series of mechanical, water totalizing meters that display the total water usage in gallons with m³ options. They are available in a range of body sizes and include NPT or BSPT optional couplings. The ECO BRASS[®] alloy body incorporates a removable section that easily disassembles for easy cleaning of any collected debris that may collect in the system while maintaining its performance.

FEATURES/BENEFITS

- Removable bottom allows for easy entry for cleaning
- Multi-jet design allows for simplicity and accuracy with wide flow ranges, even in low flow applications
- Magnetically driven, hermetically sealed register does not leak or fog and is completely separated from the water
- Designed for long service life and maintenance-free operation
- Integral strainer that protects meter from particulate damage
- Easy installation with included coupling adapters
- Pulsed output proportional to flow allows for remote flow totalization

APPLICATIONS

- Agricultural
- Irrigation
- HVAC applications
- Measuring total condenser water flow in residential, commercial and industrial applications

SPECIFICATIONS

Service: Water.
Wetted Materials: Body: ECO BRASS[®] alloy; Couplings: ECO BRASS[®] alloy; Measuring Chamber: ABS Plastic.
Flow Range: See model chart.
Accuracy: Transitional Flow: ±3%; Nominal Flow: ±1.5%.
Temperature Limit: 122°F (50°C).
Pressure Limit: 150 psi (10 bar).
Totalizing Display Maximum: See model chart.
Output Signal: Pulse output with frequency proportional to flow rate.
Pulse Options: 10 gal or 100 gal per pulse. See model chart*.
Electrical Rating: 0.01 A @ 24 VAC/DC.
Electrical Connections: Color-coded lead wires, 4.5' (1.5 m) long.
Mounting Orientation: Horizontal with register facing up.
Weight: See dimension chart.

MODEL CHART

Model	Size	Coupling Size	GPM (Gallons Per Minute)			Display Max (Gallons)	Pulse Rate (Gal/Pulse)	Price
			Max Flow	Nominal Flow Range	Transitional Flow			
WRBT-A-C-01-10	5/8 x 1/2"	1/2" NPT	20	1 to 20	0.25	9,999,999.99	10	\$115.00
WRBT-A-C-02-10	5/8 x 3/4"	3/4" NPT	20	1 to 20	0.25	9,999,999.99	10	114.00
WRBT-A-C-03-10	3/4" SL	3/4" NPT SL	30	2 to 30	0.5	9,999,999.99	10	120.00
WRBT-A-C-04-10	3/4"	3/4" NPT	30	2 to 30	0.5	9,999,999.99	10	145.00
WRBT-A-C-05-10	3/4 x 1"	1" NPT	30	2 to 30	0.5	9,999,999.99	10	164.00
WRBT-A-C-06-10	1" L	1" NPT L	50	3 to 50	0.75	9,999,999.99	10	189.00
WRBT-A-C-07-100	1-1/2"	1-1/2" NPT	100	5 to 100	1.5	9,999,999.9	100	472.00
WRBT-A-C-08-100	2"	2" NPT	160	8 to 160	2	9,999,999.9	100	624.00

USA: California Proposition 65
 ⚠️WARNING: Cancer and Reproductive Harm - www.P65Warnings.ca.gov

ECO BRASS[®] is a registered trademark patent by Mitsubishi Shindoh