

# SIGHT FLOW METERS

## SPDT or Pulse Output, Visual Flow Confirmation, Brass Body

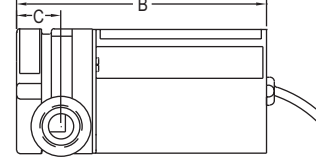
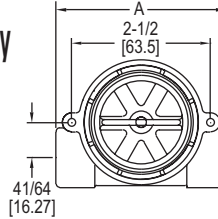
Flow Transmitters, Paddlewheel, In-Line



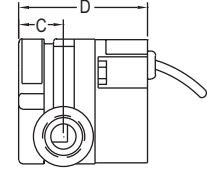
SF2-1



SF2-2



Side view VAC switch models



Side view VDC switch and transmitter models

**DIMENSIONS in [mm]**

Model	A	B	C	D	Model	A	B	C	D
SF2-104	3-1/64 [76.6]	-	7/8 [22.23]	2-21/64 [59.13]	SF2-134	3-61/64 [100.41]	-	1-1/16 [26.99]	2-61/64 [75]
SF2-101	3-1/64 [76.6]	4-1/2 [114.3]	7/8 [22.23]	-	SF2-131	3-61/64 [100.41]	4-49/64 [121.05]	1-1/16 [26.99]	-
SF2-114	3-1/64 [76.6]	-	7/8 [22.23]	2-21/64 [59.13]	SF2-204	3-1/64 [76.6]	-	13/16 [20.64]	2-21/64 [59.13]
SF2-111	3-1/64 [76.6]	4-1/2 [114.3]	7/8 [22.23]	-	SF2-214	3-1/64 [76.6]	-	13/16 [20.64]	2-21/64 [59.13]
SF2-124	3-61/64 [100.41]	-	1-1/16 [26.99]	2-61/64 [75]	SF2-224	3-61/64 [100.41]	-	1-1/16 [26.99]	2-61/64 [75]
SF2-121	3-61/64 [100.41]	4-49/64 [121.05]	1-1/16 [26.99]	-	SF2-234	3-61/64 [100.41]	-	1-1/16 [26.99]	2-61/64 [75]

The Series SF2 Sight Flow Meters combine visual confirmation of flow with a relay or pulse output. The SF2-1 offers a SPDT relay output and the SF2-2 offers a pulse output proportional to the rate of flow. The 4.5-24 VDC pulse output is compatible with most digital logic families.

**FEATURES/BENEFITS**

- Brass, solid body construction, one piece composite rotor, and ceramic shaft delivers durability with broader chemical, temperature, and pressure capabilities
- Set points are fully adjustable over the specified flow range
- The dynamic operation of the rotor guards against jamming and false actuation

**APPLICATIONS**

- Cooling and lubrication circuits
- Aggressive chemical metering
- HVAC systems
- Batching systems

**SPECIFICATIONS**

<b>Service:</b> Liquids compatible with wetted parts.	<b>Output:</b> SPDT: 1 Amp, 24 VDC resistive; 0.3 Amp, 110 VAC or 4.5-24 VDC pulse depending on model.
<b>Wetted Materials:</b> Brass body, ceramic pin, PPS rotor, Polysulfone lens and fluoroelastomer O-ring.	<b>Electrical Connections:</b> Relay output models: 20AWG PVC-jacketed, 24" cable; Pulsed output models: 22AWG PVC-jacketed, 24" cable.
<b>Accuracy:</b> Relay output: ±5%; Pulsed output: ±7% for ranges up to 5.0 GPM, ±15% for ranges up to 60.0 GPM.	<b>Process Connections:</b> See table.
<b>Temperature Limits:</b> -20 to 212°F (-29 to 100°C).	<b>Set Point Differential:</b> 15% max for relay output models.
<b>Pressure Limit:</b> 200 psig (13.8 bar) @ 70°F.	<b>Maximum Viscosity:</b> 200 SSU.
<b>Power Requirements:</b> See table.	<b>Agency Approvals:</b> CE.

**MODEL CHART - SPDT RELAY OUTPUT**

Model	Range (GPM)	Power	Connection
SF2-104	0.5 to 5.0	24 VDC	1/4" female NPT
SF2-101	0.5 to 5.0	110 VAC	1/4" female NPT
SF2-114	4.0 to 20.0	24 VDC	1/2" female NPT
SF2-111	4.0 to 20.0	110 VAC	1/2" female NPT
SF2-124	5.0 to 30.0	24 VDC	3/4" female NPT
SF2-121	5.0 to 30.0	110 VAC	3/4" female NPT
SF2-134	8.0 to 60.0	24 VDC	1" female NPT
SF2-131	8.0 to 60.0	110 VAC	1" female NPT

**MODEL CHART - PULSED OUTPUT**

Model	Range (GPM)	Power	Connection
SF2-204	0.5 to 5.0	4.5-24 VDC	1/4" female NPT
SF2-214	4.0 to 20.0	4.5-24 VDC	1/2" female NPT
SF2-224	5.0 to 30.0	4.5-24 VDC	3/4" female NPT
SF2-234	8.0 to 60.0	4.5-24 VDC	1" female NPT

USA: California Proposition 65

⚠WARNING: Cancer and Reproductive Harm - www.P65Warnings.ca.gov