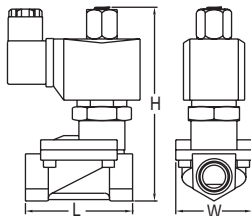
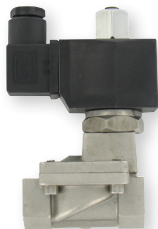


SS SOLENOID VALVE, 2-WAY GUIDED NO

Compact Design, Immune to Mounting Orientation



Model	L in [mm]	H in [mm]	W in [mm]	Weight lb [kg]
SSV-S1FX	1-5/8 [41]	3-15/32 [88]	1-9/64 [29]	0.88 [0.40]
SSV-S2FX	1-5/8 [41]	3-17/64 [83]	1-9/64 [29]	0.86 [0.39]
SSV-S3FX	2-19/32 [66]	4-57/64 [124]	1-57/64 [48]	2.09 [0.95]
SSV-S4FX	2-19/32 [66]	4-57/64 [124]	1-57/64 [48]	1.98 [0.90]
SSV-S5FX	2-61/64 [75]	5-1/8 [130]	2-9/32 [58]	2.42 [1.10]
SSV-S6FX	3-25/32 [96]	5-5/8 [143]	2-3/4 [70]	3.30 [1.50]
SSV-S7FX	5-5/32 [131]	6-7/32 [158]	3-25/32 [96]	6.16 [2.80]
SSV-S8FX	5-5/32 [131]	6-7/32 [158]	3-25/32 [96]	5.94 [2.70]
SSV-S9FX	6-1/2 [165]	7-3/64 [179]	4-47/64 [120]	10.1 [4.60]

The **Series SSV-S SS Solenoid Valve** is compact, general-service, two-way guide type solenoid valves for air, gas, water, and other liquid applications. They are available in stainless steel with a normally open design and can be oriented in any position. The solenoid enclosure provides protection against dust, while also protecting against seepage of oil and non-corrosive coolants. The Series SSV-S valves come assembled with a fluoroelastomer seal, having a maximum process temperature of 248°F (120°C). The series offers a wide range of valve sizes and flow ranges, with connection sizes from 1/8" to 2" NPT and orifices from 3 mm to 50 mm.

FEATURES/BENEFITS

- Can be oriented in any position
- Compact design
- Field replaceable coils

APPLICATIONS

- Wide variety of applications, suitable air, gas, water and other liquids

MODEL CHART

Model	Connection, NPT	Orifice in [mm]	Cv Value	Voltage	Price
SSV-S1F1	1/8"	0.12 [3]	0.25	110 VAC	\$75.00 ^(B)
SSV-S2F1	1/4"	0.12 [3]	0.25	110 VAC	75.00 ^(B)
SSV-S3F1	3/8"	0.51 [13]	4.5	110 VAC	141.00 ^(B)
SSV-S4F1	1/2"	0.51 [13]	4.5	110 VAC	141.00 ^(B)
SSV-S5F1	3/4"	0.79 [20]	7.6	110 VAC	163.00 ^(B)
SSV-S6F1	1"	0.98 [25]	12	110 VAC	198.00 ^(B)
SSV-S7F1	1-1/4"	1.38 [35]	22	110 VAC	346.00 ^(B)
SSV-S8F1	1-1/2"	1.57 [40]	30	110 VAC	346.00 ^(B)
SSV-S9F1	2"	1.97 [50]	48	110 VAC	494.00 ^(B)

Note: Consult factory for 220 VAC, 24 VAC and 24 VDC.

^(B) Items are subject to Schedule B discounts.

SPECIFICATIONS

Service: Compatible gases and liquids.

Line Size: 1/8 to 2" NPT.

End Connections: Female NPT.

Operating Pressure: 1/8 to 1/4": 0 psi (0 bar) to 87 psi (6 bar); 3/8 to 2": 7.3 psi (0.5 bar) to 116 psi (8 bar).

Pressure Limit: 174 psi (12 bar).

Wetted Material: Body: 316 SS; Spring: 304 SS; Seal: Fluoroelastomer.

Temperature Limits: Process: 248°F (120°C); Ambient: 32 to 149°F (0 to 65°C).

Power Requirements: Standard: 110 VAC; Optional: 220 VAC; 24 VDC consult factory. ⁽¹⁾

Power Consumption: See table.

Enclosure Rating: NEMA 13 (IP54).

Electrical Connection: DIN connection.

Other Materials: Nylon.

Mounting Orientation: Any position, best if solenoid vertically above valve.

Weight: See table.

Type of Operation: NO.

Agency Approvals: CE.

Voltage	50 Hz (VA)		60 Hz (VA)		DC (W)
	Inrush	Holding	Inrush	Holding	
220 VAC	82	33	82	28	-
110 VAC	82	33	82	28	-
24 VDC	-	-	-	-	32

⁽¹⁾ Solenoid Coils: See page 426 (Series SRC)