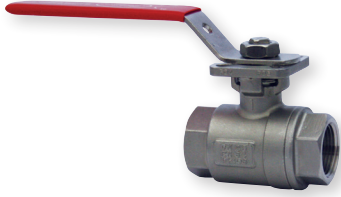


Dwyer

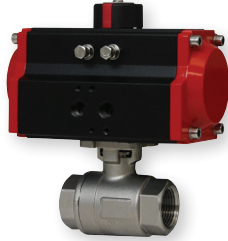
SERIES WE01 | W.E. ANDERSON™ BY DWYER

2-PIECE NPT STAINLESS STEEL BALL VALVES

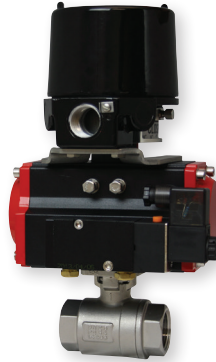
Full Port, Vented Ball, Electric or Pneumatic Actuators



WE01-EHD00



WE01-EDA02



WE01-EDA02-AA01



WE01-ETD01-A



WE01-ETI02-A



The **Series WE01 2-Piece NPT Stainless Steel Ball Valves** incorporate a full port valve for great flow rates with minimal pressure drop. The valve features a blowout proof stem for added safety, reinforced PTFE seats and seals for longer life, and a 316 SS (ASTM CF8M) ball for better performance. Actuators are direct mounted creating a compact assembly for tight spaces. Limit switches are able to be mounted directly to the valves allowing for remote position indication.

The Series WE01 can be configured with either an electric or pneumatic actuator. Electric actuators are available in weatherproof or explosion-proof, a variety of supply voltages and two-position or modulating control. Two-position actuators use the supply voltage to drive the valve open or closed, while the modulating actuator accepts a 4 to 20 mA input for valve positioning. Actuators feature thermal overload protection and permanently lubricated gear train.

The pneumatic double acting actuator uses an air supply to drive the valve open and closed. The actuator has two supply ports, with one driving the valve open and the other driving the valve closed. Spring return pneumatic actuators use the air supply to open the valve and internally loaded springs return the valve to the closed position. Also available is the SN solenoid valve to electrically switch the air supply pressure between the air supply ports for opening and closing the valve. Actuators are constructed of anodized and epoxy coated aluminum for years of corrosion free service.

FEATURES/BENEFITS

- Capable of being configured to fit any application
- Limit switches can be mounted to manual valves for remote monitoring
- Vented ball to reduce operating torque
- Weatherproof or explosion-proof electric actuators
- Double acting or spring return anodized aluminum pneumatic actuators
- Full port design reduces the pressure drop across the valve

APPLICATIONS

- Gas or liquid flow control
- Ideal for quick bubble tight shut-off

SPECIFICATIONS**VALVE**

Service: Compatible liquids and gases.

Body: 2-piece.

Line Sizes: 1/2 to 3".

End Connections: Female NPT.

Pressure Limits: 28" Hg to 1000 psi (-0.7 to 69 bar) up to 250°F.

Wetted Materials: Body and Ball: 316 SS (CF8M); Stem: 316 SS; Seat: RTFE/PTFE; Seal, Washer and Packing: PTFE.

Temperature Limits: -20 to 392°F (-29 to 200°C).

Other Materials: O-ring: Fluoroelastomer; Handle: 304 SS; Washer: 301 SS; Stem Nut, Locking Device, Gland Ring: 304 SS; Handle Sleeve: PVC.

Agency Approvals: Meets the technical requirements of EU Directive 2011/65/ EU (RoHS II).

ACTUATORS**Pneumatic "DA" and "SR" Series**

Type: DA series is double acting and SR series is spring return (rack and pinion).

Normal Supply Pressure: DA: 40 to 115 psi (2.7 to 7.9 bar); SR: 80 psi (5.5 bar).

Maximum Supply Pressure: 120 psi (8.6 bar).

Air Connections: DA01: 1/8" female NPT; DA02 to DA05: 1/4" female NPT; SR02 to SR07: 1/4" female NPT.

Housing Material: Anodized aluminum body and epoxy coated aluminum end caps.

Temperature Limits: -40 to 176°F (-40 to 80°C).

Accessory Mounting: NAMUR standard.

Electric "TD" and "MD" Series

Power Requirements: 110 VAC, 220 VAC, 24 VAC or 24 VDC (MD models not available in 24 VDC).

Power Consumption: See instruction manual.

Cycle Time (per 90°): TD01 4 s; MD01: 10 s; TD02 and MD02: 20 s; TD03 and MD03: 30 s.

Duty Rating: 85%.

Enclosure Rating: NEMA 4X (IP67).
Housing Material: Powder coated aluminum.

Temperature Limits: -22 to 140°F (-30 to 60°C).

Electrical Connection: 1/2" female NPT.

Modulating Input: 4-20 mA.

Standard Features: Manual override, position indicator, and TD models come with two limit switches.

Electric "TI" and "MI" Series

Power Requirements: 110 VAC, 220 VAC, 24 VAC or 24 VDC.

Power Consumption: See instruction manual.

Cycle Time (per 90°): See instruction manual.

Duty Rating: See instruction manual.

Enclosure Rating: NEMA 7, designed to meet hazardous locations: Class I, Group C & D; Class II, Group E, F & G; Division I & II.

Housing Material: Powder coated aluminum.

Temperature Limits: -40 to 140°F (-40 to 60°C).

Electrical Connection: 1/2" female NPT.

Modulating Input: 4-20 mA.

Standard Features: Position indicator and two limit switches.

2-PIECE NPT STAINLESS STEEL BALL VALVES

Full Port, Vented Ball, Electric or Pneumatic Actuators

MODEL CHART											
Size	Cv (gal/min)	Popular Hand Operated Model	Price	Popular Double Acting Pneumatic Model	Price	Popular Spring Return Pneumatic Model	Price	Popular NEMA 4X Two Position Electric (110 VAC) Model	Price	Popular NEMA 4X Modulating Electric (110 VAC) Model	Price
1/2"	36.64	WE01-CHD00	\$26.50 [Ⓟ]	WE01-CDA01	\$198.00 [Ⓟ]	WE01-CSR02	\$209.00 [Ⓟ]	WE01-CTD01-A	\$431.00 [Ⓟ]	WE01-CMD01-A	\$765.00 [Ⓟ]
3/4"	67.69	WE01-DHD00	39.75 [Ⓟ]	WE01-DDA01	203.00 [Ⓟ]	WE01-DSR02	231.00 [Ⓟ]	WE01-DTD01-A	431.00 [Ⓟ]	WE01-DMD01-A	807.00 [Ⓟ]
1"	110.27	WE01-EHD00	62.00 [Ⓟ]	WE01-EDA02	220.00 [Ⓟ]	WE01-ESR03	274.00 [Ⓟ]	WE01-ETD01-A	455.00 [Ⓟ]	WE01-EMD01-A	849.00 [Ⓟ]
1-1/4"	184.73	WE01-FHD00	75.50 [Ⓟ]	WE01-FDA02	274.00 [Ⓟ]	WE01-FSR03	318.00 [Ⓟ]	WE01-FTD01-A	503.00 [Ⓟ]	WE01-FMD01-A	977.00 [Ⓟ]
1-1/2"	266.62	WE01-GHD00	116.00 [Ⓟ]	WE01-GDA03	324.00 [Ⓟ]	WE01-GSR04	384.00 [Ⓟ]	WE01-GTD02-A	551.00 [Ⓟ]	WE01-GMD01-A	1105.00 [Ⓟ]
2"	485.3	WE01-HHD00	168.00 [Ⓟ]	WE01-HDA03	406.00 [Ⓟ]	WE01-HSR05	493.00 [Ⓟ]	WE01-HTD02-A	598.00 [Ⓟ]	WE01-HMD02-A	1274.00 [Ⓟ]
2-1/2"	791.57	WE01-IHD00	209.00 [Ⓟ]	WE01-IDA04	603.00 [Ⓟ]	WE01-ISR07	712.00 [Ⓟ]	WE01-ITD03-A	1051.00 [Ⓟ]	WE01-IMD03-A	1444.00 [Ⓟ]
3"	1151.95	WE01-JHD00	462.00 [Ⓟ]	WE01-JDA05	821.00 [Ⓟ]	WE01-JSR07	931.00 [Ⓟ]	WE01-JTD03-A	1243.00 [Ⓟ]	WE01-JMD03-A	1529.00 [Ⓟ]

Ⓟ Items are subject to Schedule B discounts.

MODEL CHART - HAND OPERATED & PNEUMATIC ACTUATOR							
Example	WE01	-EDA02	-A	A	01	WE01-EDA02-AA01	Price
Series	WE01					316 SS 2-piece NPT	-
Size and Actuator		CHD00				1/2" hand operated	\$26.50 [Ⓟ]
		DHD00				3/4" hand operated	39.75 [Ⓟ]
		EHD00				1" hand operated	62.00 [Ⓟ]
		FHD00				1-1/4" hand operated	75.50 [Ⓟ]
		GHD00				1-1/2" hand operated	116.00 [Ⓟ]
		HH00				2" hand operated	168.00 [Ⓟ]
		IHD00				2-1/2" hand operated	209.00 [Ⓟ]
		JHD00				3" hand operated	462.00 [Ⓟ]
		CDA01				1/2" double acting	198.00 [Ⓟ]
		DDA01				3/4" double acting	203.00 [Ⓟ]
		EDA02				1" double acting	220.00 [Ⓟ]
		FDA02				1-1/4" double acting	274.00 [Ⓟ]
		GDA03				1-1/2" double acting	324.00 [Ⓟ]
		HDA03				2" double acting	406.00 [Ⓟ]
		IDA04				2-1/2" double acting	603.00 [Ⓟ]
		JDA05				3" double acting	821.00 [Ⓟ]
		CSR02				1/2" spring return	209.00 [Ⓟ]
		DSR02				3/4" spring return	231.00 [Ⓟ]
		ESR03				1" spring return	274.00 [Ⓟ]
	FSR03				1-1/4" spring return	318.00 [Ⓟ]	
	GSR04				1-1/2" spring return	384.00 [Ⓟ]	
	HSR05				2" spring return	493.00 [Ⓟ]	
	ISR07				2-1/2" spring return	712.00 [Ⓟ]	
	JSR07				3" spring return	931.00 [Ⓟ]	
Solenoid			N			No solenoid	-
			A			NEMA 4X NAMUR solenoid	+53.50 [Ⓟ]
Solenoid Voltage				N		No solenoid	-
				A		110 VAC	-
				B		220 VAC	-
				C		24 VAC	-
				D		24 VDC	-
				E		12 VDC	-
Positioner and Switches					00	None	-
					01	42AD0 exp limit switch	+245.00 [Ⓟ]
					02	45VD0 exp position transmitter	+558.00 [Ⓟ]
					03	42AD0-B ATEX limit switch	+343.00 [Ⓟ]
					04	42AD0-IE IECEX limit switch	+340.00 [Ⓟ]
					06	QV-210101 poly limit switch	+153.00 [Ⓟ]
					07	VPS and P1 prox switch	+219.00 [Ⓟ]
					08	265ER-D5 positioner	+679.00 [Ⓟ]
					09	285ER-D5 smart positioner	+1592.00 [Ⓟ]
Options					NO	Fail open spring return actuator	-

Ⓟ Items are subject to Schedule B discounts.

ACCESSORIES		
Model	Description	Price
AFR4	Air filter regulator 0 to 120 psi	\$72.00 [Ⓟ]
VB-01	Volume booster	182.00 [Ⓟ]

Ⓟ Items are subject to Schedule B discounts.

MODEL CHART - ELECTRIC ACTUATOR					
Example	WE01	-GMD01	-A	WE01-GMD01-A	Price
Series	WE01			316 SS 2-piece NPT	-
Size and Actuator		CTD01		1/2" NEMA 4X two-position	\$431.00 [Ⓟ]
		DTD01		3/4" NEMA 4X two-position	431.00 [Ⓟ]
		ETD01		1" NEMA 4X two-position	455.00 [Ⓟ]
		FTD01		1-1/4" NEMA 4X two-position	503.00 [Ⓟ]
		GTD02		1-1/2" NEMA 4X two-position	551.00 [Ⓟ]
		HTD02		2" NEMA 4X two-position	598.00 [Ⓟ]
		ITD03		2-1/2" NEMA 4X two-position	1051.00 [Ⓟ]
		JTD03		3" NEMA 4X two-position	1243.00 [Ⓟ]
		CMD01		1/2" NEMA 4X modulating	765.00 [Ⓟ]
		DMD01		3/4" NEMA 4X modulating	807.00 [Ⓟ]
		EMD01		1" NEMA 4X modulating	849.00 [Ⓟ]
		FMD01		1-1/4" NEMA 4X modulating	977.00 [Ⓟ]
		GMD01		1-1/2" NEMA 4X modulating	1105.00 [Ⓟ]
		HMD02		2" NEMA 4X modulating	1274.00 [Ⓟ]
		IMD03		2-1/2" NEMA 4X modulating	1444.00 [Ⓟ]
		JMD03		3" NEMA 4X modulating	1529.00 [Ⓟ]
		CTI01		1/2" exp two-position	757.00 [Ⓟ]
		DTI01		3/4" exp two-position	851.00 [Ⓟ]
		ETI02		1" exp two-position	861.00 [Ⓟ]
		FTI02		1-1/4" exp two-position	994.00 [Ⓟ]
		GTI02		1-1/2" exp two-position	1100.00 [Ⓟ]
		HTI04		2" exp two-position	1529.00 [Ⓟ]
		ITI05		2-1/2" exp two-position	1910.00 [Ⓟ]
		JTI06		3" exp two-position	2197.00 [Ⓟ]
		CMI01		1/2" exp electric modulating	1698.00 [Ⓟ]
		DMI01		3/4" exp electric modulating	1698.00 [Ⓟ]
		EMI02		1" exp electric modulating	1741.00 [Ⓟ]
	FMI02		1-1/4" exp electric modulating	1783.00 [Ⓟ]	
	GMI02		1-1/2" exp electric modulating	1783.00 [Ⓟ]	
	HMI04		2" exp electric modulating	2122.00 [Ⓟ]	
	IMI05		2-1/2" exp electric modulating	2547.00 [Ⓟ]	
	JMI06		3" exp electric modulating	2802.00 [Ⓟ]	
Actuator Voltage			A	110 VAC	-
			B	220 VAC	-
			C	24 VAC	+75.00 [Ⓟ]
			D	24 VDC	+75.00 [Ⓟ]

Ⓟ Items are subject to Schedule B discounts.

REPAIR KIT		
Model	Valve Series and Size	Price
VRK-02	WE01-1/2"	\$3.75
VRK-03	WE01-3/4"	5.00
VRK-04	WE01-1"	6.10
VRK-06	WE01-1-1/2"	12.50
VRK-07	WE01-2"	16.00
VRK-08	WE01-2-1/2"	32.50
VRK-09	WE01-3"	53.50
Parts List - Included in Kit		
1 PTFE thrust washer		
1 FKM O-ring		
2 PTFE stem packing		
2 PTFE seals		
2 RTFE seats		