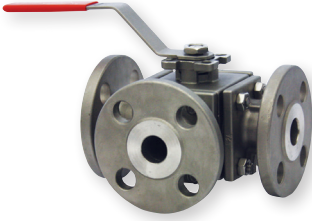
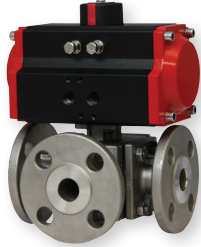


3-WAY FLANGED STAINLESS STEEL BALL VALVES

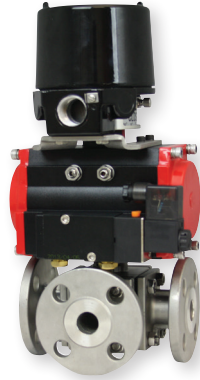
150# ANSI Flange, Vented Ball, Electric or Pneumatic Actuators



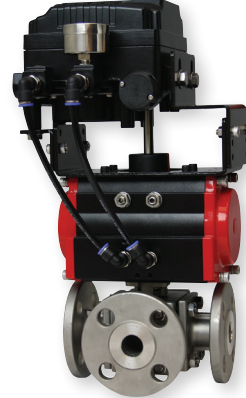
WE34-DHD00-L1



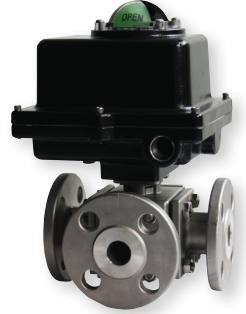
WE34-DDA03-T2



WE34-DDA03-T1-AA01



WE34-DDA03-T2-NN08



WE34-DT103-T3-A



The **Series WE34 3-Way Flanged Stainless Steel Ball Valves** incorporate a full port 3-way flanged SS ball valve for great flow rates with minimal pressure drop. The valve features a blowout-proof stem for added safety, reinforced PTFE seats and seals for longer life, and a 316 SS (ASTM CF8M) ball for better performance. Actuators are direct mounted creating a compact assembly for tight spaces. Limit switches are able to be mounted directly to the valves allowing for remote position indication.

The Series WE34 can be configured with either an electric or pneumatic actuator. Electric actuators are available in weatherproof or explosion-proof, a variety of supply voltages and two-position or modulating control. Two-position actuators use the supply voltage to drive the valve open or closed, while the modulating actuator accepts a 4-20 mA input for valve positioning. Actuators feature thermal overload protection and permanently lubricated gear train.

The pneumatic double acting actuator uses an air supply to drive the valve open and closed. The actuator has two supply ports, with one driving the valve open and the other driving the valve closed. Spring return pneumatic actuators use the air supply to open the valve and internally loaded springs return the valve to the closed position. Also available is the SN solenoid valve to electrically switch the air supply pressure between the air supply ports for opening and closing the valve. Actuators are constructed of anodized and epoxy coated aluminum for years of corrosion free service.

FEATURES/BENEFITS

- Capable of being configured to fit any application
- Limit switches can be mounted to manual valves for remote monitoring
- Vented ball to reduce operating torque
- Weatherproof or explosion-proof electric actuators
- Double acting or spring return anodized aluminum pneumatic actuators
- Full port design reduces the pressure drop across the valve
- Eliminates threads and reduces installation and maintenance time

APPLICATIONS

- Gas or liquid flow control
- Ideal for quick bubble tight shut-off
- Mixing or diverting liquids and gases

SPECIFICATIONS

VALVE

Service: Compatible liquids and gases.

Body: 3-way.

Line Sizes: 1/2 to 3".

End Connections: 150# ANSI flange.

Pressure Limits: 28" Hg to 275 psi (-0.7 to 19 bar) up to 392°F.

Wetted Materials: Body and ball: 316 SS (CF8M); Stem: 316 SS; Seat: RTFE/PTFE; Seal, Washer, and Packing: PTFE.

Temperature Limits: -20 to 392°F (-29 to 200°C).

Other Materials: O-ring:

Fluoroelastomer; Handle: 304 SS; Washer: 301 SS; Stem Nut, Locking Device, Gland Ring: 304 SS; Handle Sleeve: PVC.

Agency Approvals: Meets the technical requirements of EU Directive 2011/65/ EU (RoHS II).

ACTUATORS

Pneumatic "DA" and "SR" Series

Type: DA series is double acting and SR series is spring return (rack and pinion).

Normal Supply Pressure: DA: 40 to 115 psi (2.7 to 7.9 bar); SR: 80 psi (5.5 bar).

Maximum Supply Pressure: 120 psi (8.6 bar).

Air Connections: DA01: 1/8" female NPT; DA02 to DA08: 1/4" female NPT; SR03 to SR09: 1/4" female NPT.

Housing Material: Anodized aluminum body and epoxy coated aluminum end caps.

Temperature Limits: -40 to 176°F (-40 to 80°C).

Accessory Mounting: NAMUR standard.

Electric "TD" and "MD" Series

Power Requirements: 110 VAC, 220 VAC, 24 VAC or 24 VDC (MD models not available in 24 VDC).
Power Consumption: See instruction manual.

Cycle Time (per 90°): TD01: 4 s; MD01: 10 s; TD02 and MD02: 20 s; TD03 and MD03: 30 s; TD04 and MD04: 30 s.

Duty Rating: 85%.

Enclosure Rating: NEMA 4X (IP67).

Housing Material: Powder coated aluminum.

Temperature Limits: -22 to 140°F (-30 to 60°C).

Electrical Connection: 1/2" female NPT.

Modulating Input: 4-20 mA.

Standard Features: Manual override, position indicator, and TD models come with two limit switches.

Electric "TI" and "MI" Series

Power Requirements: 110 VAC, 220 VAC, 24 VAC or 24 VDC.

Power Consumption: See instruction manual.

Cycle Time (per 90°): See instruction manual.

Duty Rating: See instruction manual.

Enclosure Rating: NEMA 7, designed to meet hazardous locations: Class I, Group C & D; Class II, Group E, F & G; Division I & II.

Housing Material: Powder coated aluminum.

Temperature Limits: -40 to 140°F (-40 to 60°C).

Electrical Connection: 1/2" female NPT.

Modulating Input: 4-20 mA.

Standard Features: Position indicator and two limit switches.



SERIES WE34 | W.E. ANDERSON™ BY DWYER

3-WAY FLANGED STAINLESS STEEL BALL VALVES

150# ANSI Flange, Vented Ball, Electric or Pneumatic Actuators

MODEL CHART											
Size	Cv (gal/min)	Popular Hand Operated Model	Price	Popular Double Acting Pneumatic Model	Price	Popular Spring Return Pneumatic Model	Price	Popular NEMA 4X Two Position Electric (110 VAC) Model	Price	Popular NEMA 4X Modulating Electric (110 VAC) Model	Price
1/2"	26	WE34-CHD00-T2	\$335.00 ^(B)	WE34-CDA02-T2	\$574.00 ^(B)	WE34-CSR03-T2	\$637.00 ^(B)	WE34-CTD02-T2-A	\$892.00 ^(B)	WE34-CMD01-T2-A	\$1401.00 ^(B)
3/4"	50	WE34-DHD00-T2	425.00 ^(B)	WE34-DDA02-T2	669.00 ^(B)	WE34-DSR03-T2	733.00 ^(B)	WE34-DTD02-T2-A	1083.00 ^(B)	WE34-DMD01-T2-A	1656.00 ^(B)
1"	94	WE34-EHD00-T2	546.00 ^(B)	WE34-EDA03-T2	797.00 ^(B)	WE34-ESR05-T2	861.00 ^(B)	WE34-ETD02-T2-A	1211.00 ^(B)	WE34-EMD02-T2-A	1783.00 ^(B)
1-1/2"	260	WE34-GHD00-T2	1030.00 ^(B)	WE34-GDA05-T2	1211.00 ^(B)	WE34-GSR06-T2	1274.00 ^(B)	WE34-GTD03-T2-A	1656.00 ^(B)	WE34-GMD03-T2-A	2166.00 ^(B)
2"	380	WE34-HHD00-T2	1453.00 ^(B)	WE34-HDA06-T2	1656.00 ^(B)	WE34-HSR07-T2	1783.00 ^(B)	WE34-HTD03-T2-A	2420.00 ^(B)	WE34-HMD03-T2-A	2802.00 ^(B)
2-1/2"	650	WE34-IHD00-T2	2420.00 ^(B)	WE34-IDA07-T2	2802.00 ^(B)	WE34-ISR08-T2	2929.00 ^(B)	WE34-ITD04-T2-A	3183.00 ^(B)	WE34-IMD04-T2-A	3820.00 ^(B)
3"	1000	WE34-JHD00-T2	2904.00 ^(B)	WE34-JDA08-T2	3183.00 ^(B)	WE34-JSR09-T2	3439.00 ^(B)	WE34-JTD04-T2-A	3439.00 ^(B)	WE34-JMD04-T2-A	4456.00 ^(B)

^(B) Items are subject to Schedule B discounts.

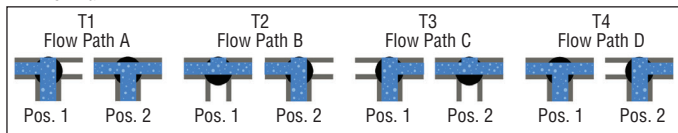
MODEL CHART - HAND OPERATED & PNEUMATIC ACTUATOR							
Example	WE34	-JDA08	-T1	-A	B 00	WE34-JDA08-T1-AB00	Price
Series	WE34					316 SS 3-way 150# ANSI flange	-
Size and Actuator		CHD00				1/2" hand operated	\$335.00 ^(B)
		DHD00				3/4" hand operated	425.00 ^(B)
		EHD00				1" hand operated	546.00 ^(B)
		GHD00				1-1/2" hand operated	1030.00 ^(B)
		HHD00				2" hand operated	1453.00 ^(B)
		IHD00				2-1/2" hand operated	2420.00 ^(B)
		JHD00				3" hand operated	2904.00 ^(B)
		CDA02				1/2" double acting	574.00 ^(B)
		DDA02				3/4" double acting	669.00 ^(B)
		EDA03				1" double acting	797.00 ^(B)
		GDA05				1-1/2" double acting	1211.00 ^(B)
		HDA06				2" double acting	1656.00 ^(B)
		IDA07				2-1/2" double acting	2802.00 ^(B)
		JDA08				3" double acting	3183.00 ^(B)
		CSR03				1/2" spring return	637.00 ^(B)
		DSR03				3/4" spring return	733.00 ^(B)
	ESR05				1" spring return	861.00 ^(B)	
	GSR06				1-1/2" spring return	1274.00 ^(B)	
	HSR07				2" spring return	1783.00 ^(B)	
	ISR08				2-1/2" spring return	2929.00 ^(B)	
	JSR09				3" spring return	3439.00 ^(B)	
Valve Position			T1			Flow path A	-
			T2			Flow path B	-
			T3			Flow path C	-
			T4			Flow path D	-
			L1			Flow path E	-
Solenoid				N		No solenoid	-
				A		NEMA 4X NAMUR solenoid	+53.50 ^(B)
Solenoid Voltage				A		110 VAC	-
				B		220 VAC	-
				C		24 VAC	-
				D		24 VDC	-
				E		12 VDC	-
							-
Positioner and Switches					00	None	-
					01	42AD0 exp limit switch	+245.00 ^(B)
					02	45VD0 exp position transmitter	+558.00 ^(B)
					03	42AD0-B ATEX limit switch	+343.00 ^(B)
					04	42AD0-IE IECEX limit switch	+340.00 ^(B)
					06	QV-210101 poly limit switch	+153.00 ^(B)
					07	VPS and P1 prox switch	+219.00 ^(B)
					08	265ER-D5 positioner	+679.00 ^(B)
					09	285ER-D5 smart positioner	+1592.00 ^(B)

^(B) Items are subject to Schedule B discounts.

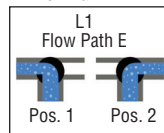
ACCESSORIES		
Model	Description	Price
AFR4	Air filter regulator 0 to 120 psi	\$72.00 ^(B)
VB-01	Volume booster	182.00 ^(B)

^(B) Items are subject to Schedule B discounts.

"T" Port Ball



"L" Port Ball



MODEL CHART - ELECTRIC ACTUATOR						
Example	WE34	-HMD03	-T3	-A	WE34-HMD03-T3-A	Price
Series	WE34				316 SS 3-way 150# ANSI flange	-
Size and Actuator		CTD02			1/2" NEMA 4X two-position	\$892.00 ^(B)
		DTD02			3/4" NEMA 4X two-position	1083.00 ^(B)
		ETD02			1" NEMA 4X two-position	1211.00 ^(B)
		GTD03			1-1/2" NEMA 4X two-position	1656.00 ^(B)
		HTD03			2" NEMA 4X two-position	2420.00 ^(B)
		ITD04			2-1/2" NEMA 4X two-position	3183.00 ^(B)
		JTD04			3" NEMA 4X two-position	3439.00 ^(B)
		CMD01			1/2" NEMA 4X modulating	1401.00 ^(B)
		DMD01			3/4" NEMA 4X modulating	1656.00 ^(B)
		EMD02			1" NEMA 4X modulating	1783.00 ^(B)
		GMD03			1-1/2" NEMA 4X modulating	2166.00 ^(B)
		HMD03			2" NEMA 4X modulating	2802.00 ^(B)
		IMD04			2-1/2" NEMA 4X modulating	3820.00 ^(B)
		JMD04			3" NEMA 4X modulating	4456.00 ^(B)
		CTI02			1/2" exp two-position	1783.00 ^(B)
		DTI02			3/4" exp two-position	1910.00 ^(B)
		ETI03			1" exp two-position	2038.00 ^(B)
		GTI05			1-1/2" exp two-position	2674.00 ^(B)
		HTI06			2" exp two-position	3693.00 ^(B)
		ITI06			2-1/2" exp two-position	4456.00 ^(B)
		JTI08			3" exp two-position	5729.00 ^(B)
		CMI02			1/2" exp electric modulating	3120.00 ^(B)
		DMI02			3/4" exp electric modulating	3183.00 ^(B)
		EMI03			1" exp electric modulating	3311.00 ^(B)
		GMI05			1-1/2" exp electric modulating	3947.00 ^(B)
		HMI06			2" exp electric modulating	4966.00 ^(B)
		IMI06			2-1/2" exp electric modulating	5729.00 ^(B)
		JMI08			3" exp electric modulating	7002.00 ^(B)
Valve Position			T1		Flow path A	-
			T2		Flow path B	-
			T3		Flow path C	-
			T4		Flow path D	-
			L1		Flow path E	-
Actuator Voltage				A	110 VAC	-
				B	220 VAC	-
				C	24 VAC	+75.00 ^(B)
				D	24 VDC	+75.00 ^(B)

^(B) Items are subject to Schedule B discounts.

REPAIR KIT		
Model	Valve Series and Size	Price
VRK-50	WE34-1/2"	\$67.50
VRK-51	WE34-3/4"	84.50
VRK-52	WE34-1"	131.00
VRK-54	WE34-1-1/2"	169.00
VRK-55	WE34-2"	219.00
VRK-56	WE34-2-1/2"	242.00
VRK-57	WE34-3"	363.00

Parts List - Included in Kit	
1	PTFE thrust washer
1	FKM O-ring
2	PTFE stem packing
2	PTFE seals
2	RTFE seats