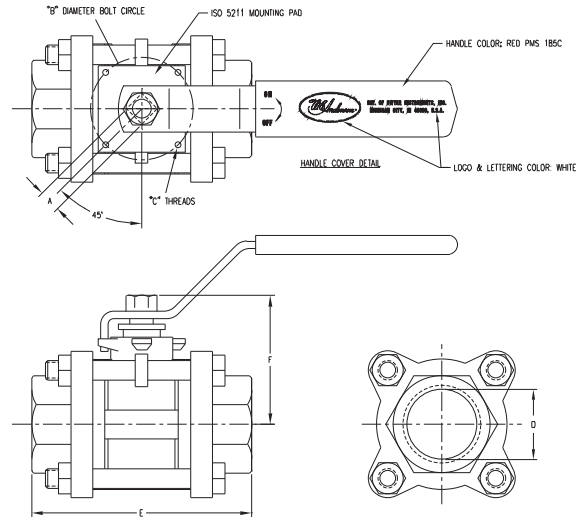




Series 2BVS Ball Valve

Bulletin F-62

Specifications - Installation and Operating Instructions



The **Series 2BVS BALL VALVE** from W.E. Anderson, a division of Dwyer Instruments, is an economical, stainless steel valve ideal for food and chemical applications. Three piece design allows for easy swing-out inline maintenance and cleaning. The 2BVS Series is investment cast stainless steel, ensuring exceptional quality and corrosion resistance. Reinforced PTFE seats provide strength and excellent sealing up to 1000psi. Standard ISO 5211 mounting pad allows for easy electric or pneumatic automation. Full port design provides maximum pressure drop.

SPECIFICATIONS

End Connections: Female NPT.

Pressure Limits: 1000 psi (69 bar) WOG, 125 psi (8.6 bar) SWP.

Wetted Material: Body, Ball, End Cap; CF8M; Stem: 316SS; Seats & Seals: RPTFE; O-Ring: Fluoroelastomer.

Temperature Limits: -40 to 450°F (-40 to 232°C).

Other Materials: 304 SS, Vinyl.

INSTALLATION

Before installing, inspect the valve and pipe ends to make sure they are free from any debris that may prevent a proper and secure connection. Clean pipe ends with compressed air and wipe with a clean cloth. Be sure the pipe ends are threaded correctly to prevent damage to valve internals. Apply a PTFE-based thread sealant to the pipe ends. To prevent distortion, use a smooth jawed wrench on the hex ends of the valve only, not the body. Use pipe wrenches on pipe and fittings only.

OPERATION

The ball valve is bi-directional - permitting flow in either direction - and can be installed in any position. The valve operates with a quarter-turn (90°) rotation. To open, rotate the valves handle in a counter-clockwise direction; to close, rotate this handle clockwise.

Model No.	Size	A	B	C	D	E	F
2BVS3AT1000	1/4"	.354	1.42/1.65	.22/.28	.45	2.36	1.93
2BVS3BT1000	3/8"	.354	1.42/1.65	.22/.28	.50	2.36	1.93
2BVS3CT1000	1/2"	.354	1.42/1.65	.22/.28	.59	2.95	1.93
2BVS3ET1000	3/4"	.354	1.42/1.65	.22/.28	.79	3.15	2.09
2BVS3FT1000	1"	.433	1.65/1.97	.28/.35	.98	3.45	2.60
2BVS3GT1000	1-1/4"	.433	1.65/1.97	.28/.35	1.26	4.33	2.83
2BVS3HT1000	1-1/2"	.551	1.97/2.76	.28/.35	1.50	4.72	3.23
2BVS3JT1000	2"	.551	1.97/2.76	.28/.35	1.97	5.51	3.63

MAINTENANCE

This valve is designed for applications requiring ease of cleaning and maintenance.

To disassemble:

First, make sure the valve is isolated from both process media and pressure. Rotate the valve several times to relieve any pressure contained in the ball cavity. Then loosen the four bolts and remove the top bolt opposite the location lug. The center section of the valve should now "swing out", exposing the valve internals, while the end-caps remain connected to the pipe.

To re-assemble:

After maintenance, return the center section to the valve and re-install the removed top bolt. Then tighten all bolts in a "star" pattern to ensure even compression. Rotate the valve handle several times to check for free travel.

The Series 2BVS is not field serviceable and should be returned if repair is needed (field repair should not be attempted and may void warranty). Be sure to include a brief description of the problem plus any relevant application notes. Contact customer service to receive a return goods authorization number before shipping.