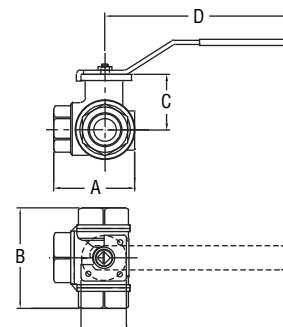




Series 3ABVH 3-Way Brass Ball Valve

Specifications - Installation and Operating Instructions



Dimensions (in)

Model	NPT Size	ISO 5211	A	B	C	D	Weight lb (kg)
3ABVHX00	1/4"	F03	2.07	2.63	0.93	4.72	1.16 (0.53)
3ABVHX01	3/8"	F03	2.07	2.63	0.93	4.72	1.16 (0.53)
3ABVHX02	1/2"	F03	2.19	2.87	0.93	4.72	1.21 (0.55)
3ABVHX03	3/4"	F03	2.45	3.18	1.01	4.72	1.44 (0.65)
3ABVHX04	1"	F05	2.87	3.74	1.20	6.69	2.64 (1.20)
3ABVHX05	1-1/4"	F05	3.42	4.38	1.42	6.69	4.15 (1.88)
3ABVHX06	1-1/2"	F05	3.91	4.86	1.91	6.69	6.02 (2.73)
3ABVHX07	2"	F07	4.61	5.70	2.31	9.05	9.08 (4.12)
3ABVHX08	2-1/2"	F07	5.54	6.93	2.56	9.05	16.33 (7.41)
3ABVHX09	3"	F07	5.74	7.08	2.76	9.05	19.55 (8.87)

The Series 3ABVH 3-Way Brass Ball Valve offers an economical hand lever ball valve for commercial and general industrial use. Perfect for manual valve shut off in hot and cold water systems. The Series 3ABVH features PTFE seats and seals for longer life and leak-free operation and a stem design providing additional protection against blow outs. Valve body, end caps, ball, and stem are all made of quality brass. The ISO 5211 mounting pad allows for direct mounting of pneumatic and electric actuators.

OPERATIONS

Manual Operations-To operate the valve, turn the handle 90° (1/4 turn). Valve in position 1: the handle is parallel (in line) with the valve pipeline. Valve in position 2: the handle is perpendicular (crossed) with the valve or pipeline.

Automated Operation-Valves with actuators should be checked for stem alignment. Most applications are direct mount to the actuator, greatly reducing any side load or increased torque. Make sure that all insert adapters are properly placed on the valve stem and fully engaged in the actuator.

INSTALLATION

General Information for On-Site Installation-The valve may be fitted in any position in the pipeline. For automated operation, W.E. Anderson recommends that the valve and actuator be installed vertically in case of valve leakage, although this is not necessary for proper operation of the valve. Prior to installation, inspect valve and pipe ends to make sure they are free from debris. Materials trapped inside the valve can cause damage to the seats and result in leakage. Clean pipe ends and check for proper threading to prevent damage to valve internals. Use a PTFE based thread sealant applied to the pipe threads. Use a smooth wrench on the hex portion of the valve, not the valve body, to tighten. Use pipe wrenches on pipe and pipe fittings only.

SPECIFICATIONS

Service: Compatible liquids and gases.

Line Size: 1/4 to 3".

End Connection: Female NPT.

Pressure Limit: 400 psi (27.6 bar).

Wetted Materials:

Body, ends, ball (hard chrome plated), and packing nut: Brass CW 617N UNI EN 12165;

Seat and stem seal: PTFE.

Temperature Limit: 320°F (160°C).

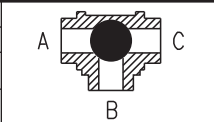
Other Materials:

Thrust washer: PTFE;

Stem and body o-ring: FKM;

Screw and lever handle: Plated steel;

Stem and bushing: Brass CW 617N UNI EN 12165.

Port Configuration	Flow Path		
	Position 1	Position 2	
"T" Port	A-B	A-C	
"L" Port	B-C	A-B	

WARRANTY

The Series 3ABVH warranties from defects in materials and workmanship are covered for (1) year from the date of purchase. In the unlikely event the valve should fail, the unit can be returned to the factory for warranty repair if the warranty period has not expired. Be sure to include a brief description of the problem plus any relevant application notes. Contact our customer service department for an RGA number and to set up the return.