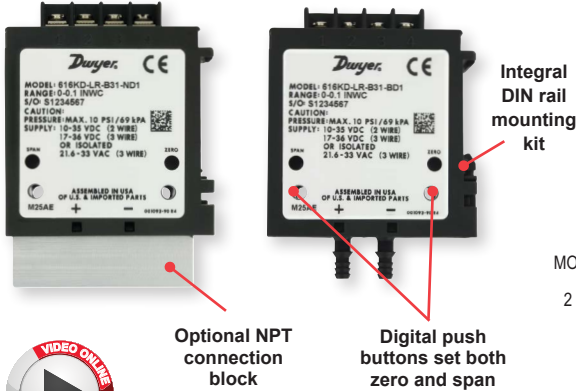


DIFFERENTIAL PRESSURE TRANSMITTERS - LOW RANGES

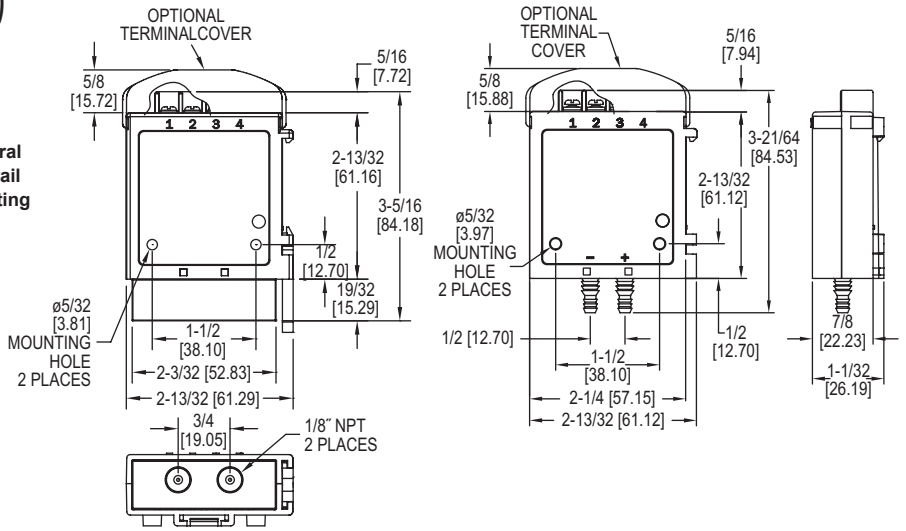
High Accuracy, Ranges Down to 0.1 in w.c. (25 Pa)

CALIBRATION SERVICES AVAILABLE



Optional NPT connection block

Digital push buttons set both zero and span



The Series 616KD-LR Differential Pressure Transmitters - Low Ranges are designed for simplicity, making it the ideal choice for installers and maintenance professionals. These low range instruments not only alleviate cumbersome turn pots typically found in most transmitters, but eliminate entirely the need to span the instruments during calibration. With single digital push-button, both ZERO AND SPAN are calibrated properly, nothing else is required. No additional reference pressure sources or separate calibration devices are necessary.

FEATURES/BENEFITS

- Wide selection of low ranges and accuracy cover numerous applications minimizing components and standardizing on design
- Simple calibration push-buttons to set zero and span, saving time installing and maintaining over the service life
- Cost effective and compact device suitable for OEM applications where space, simplicity, and value are key
- Simultaneous current and voltage outputs
- Optional 1/8" NPT process connection allows for use with metal barbed fittings or compression fittings for use with metal tubing
- Optional plenum rated units meeting UL Standard 2043 are available

APPLICATIONS

- Air handlers
- Variable air volume
- Duct pressure
- Filter monitoring

SPECIFICATIONS

Service: Air and non-combustible, compatible gases.
Wetted Materials: Consult factory.
Accuracy: ±0.25% FS for ±0.4" (100 Pa) and ±0.5" (125 Pa), ±0.5% FS for ±0.25" (60 Pa), and ±1% FS for ±0.1" (25 Pa).
Stability: ±1% / year FSO.
Temperature Limits: 0 to 140°F (-17.8 to 60°C).
Pressure Limits: 1 psi max., operation; 10 psi burst.
Power Requirements: 10 to 35 VDC (2 wire), 17 to 36 VDC or isolated 21.6 to 33 VAC (3 wire).
Output Signal: 4 to 20 mA (2-wire), 0 to 5 VDC, 0 to 10 VDC (3-wire).
Response Time: 2.5 Hz sample rate.

Zero and Span Adjustments: Push buttons.
Loop Resistance: Current Output: 0 to 1250Ω max; Voltage Output: Min. load resistance 1kΩ.
Current Consumption: 40 mA max.
Electrical Connections: Screw-type terminal block.
Process Connections: Barbed, dual size to fit 1/8" & 3/16" (3 mm & 5 mm) ID rubber or vinyl tubing, or 1/8" NPT.
Enclosure Rating: NEMA1 (IP20).
Mounting Orientation: Vertical with pressure connections pointing down.
Weight: 1.8 oz (51 g).
Agency Approvals: CE, optional plenum rated units meet UL Standard 2043.

MODEL CHART								
Example	616KD-LR	-A	34	-B	D1	-FC	616KD-LR-A34-BD1-FC	Price
Series	616KD-LR						Differential pressure transmitter	-
Accuracy		A					0.25% FS accuracy	\$134.00
		B					1.0% FS accuracy	88.00
		D					0.5% FS accuracy	105.00
Range			31				0 to 0.1 in w.c. ①	-
			32				0 to 0.25 in w.c. ②	-
			34				0 to 0.4 in w.c.	-
			35				0 to 0.5 in w.c.	-
			41				0 to ±0.1 in w.c. ①	-
			42				0 to ±0.25 in w.c. ②	-
			44				0 to ±0.4 in w.c.	-
			45				0 to ±0.5 in w.c.	-
			61				25 Pa ①	-
			62				60 Pa ②	-
			64				100 Pa	-
			65				125 Pa	-
			71				0 to ±25 Pa ①	-
		72				0 to ±60 Pa ②	-	
		74				0 to ±100 Pa	-	
		75				0 to ±125 Pa	-	
Process Connection				B			Plastic barb	-
				N			1/8" female NPT with front push-button	+15.00
Output					D1		4 to 20 mA and 0 to 10 V	-
					D2		4 to 20 mA and 0 to 5 V	-
					D3		4 to 20 mA and 2 to 10 V	-
					D4		4 to 20 mA and 1 to 5 V	-
Options						AT	Aluminum tag	+14.25
						COC	Certificate of Conformance	-
						FC	Factory calibration certificate	+30.00
						NIST	NIST traceable calibration certificate	+139.00 ①
						TC	Terminal cover	+1.00
					PR	Plenum rated	35.00	

①B accuracy only. ②B and D accuracies only. ① Items are net priced and are not subject to any discount.

ACCESSORIES		
Model	Description	Price
A-360	Aluminum DIN rail 1 m	\$8.60
A-618	Protective terminal cap	1.00



A-618 installed on unit

Differential Pressure Transmitters