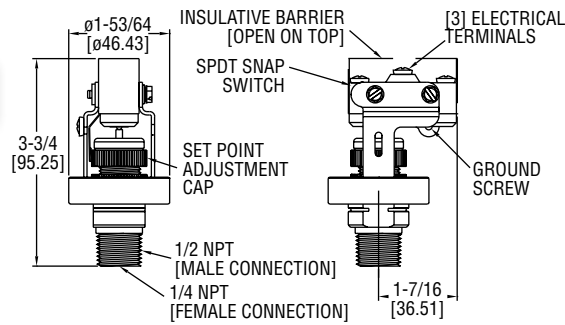
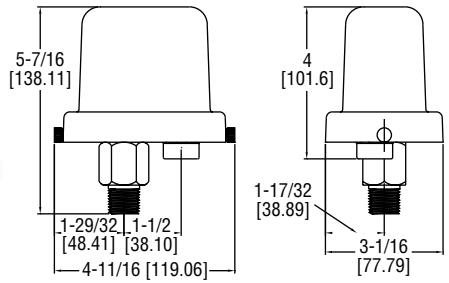


LOW COST OEM PRESSURE SWITCH

Field Installable Weatherproof Enclosure



A1F



A1F with A-447

Single Pressure Switches

LOW COST AND PRECISION MADE, THE A1F PRESSURE SWITCH is ideal for OEM industrial applications. Wetted materials of 316 SS and fluorocarbon ensure great chemical compatibility with a wide range of process media. The open case style is perfect for panel mounting applications like pump skids. Field-installable weatherproof enclosure is available in polycarbonate offering a low cost weatherproof switch. Superior 15 A contact allows direct control of motors or pumps without the use of external relays, a true cost savings. Features include a convenient indicating scale for quick and easy field adjustment.

SPECIFICATIONS	
Service:	Compatible liquids and gases.
Wetted Materials:	Pressure Chamber: 316 SS; Diaphragm: Fluorocarbon.
Temperature Limit:	-40 to 175°F (-40 to 80°C).
Pressure Limits:	750 psig (51 bar).
Enclosure Rating:	No rating for open construction. Installed properly within an optional A-447 enclosure meets NEMA 4X (IP66) standards.
Switch Type:	SPDT snap switch.
Electrical Rating:	15 A @ 120/240/480 VAC; 1/8 HP @ 125 VAC; 1/4 HP @ 250 VAC.
Electrical Connection:	Screw terminals.
Process Connection:	1/4" female NPT and 1/2" male NPT.
Mounting Orientation:	Within 20° of vertical.
Set Point Adjustment:	Knurled screw cap with indicating scale.
Deadband:	Fixed. See deadband chart.
Weight:	10.5 oz (297 g).
Agency Approvals:	cUL, UL.

MODEL CHART			
Model	Range psg (bar)	Deadband at Min. Range psg (bar)	Deadband at Max. Range psg (bar)
A1F-O-SS-1-1	2 to 15 (0.14 to 1.03)	2 (0.14)	3 (0.21)
A1F-O-SS-1-2	4 to 75 (0.28 to 5.17)	4 (0.27)	15 (1.0)
A1F-O-SS-1-3	8 to 225 (0.55 to 15.5)	8 (0.55)	25 (1.7)
A1F-O-SS-1-4	16 to 450 (1.1 to 31.0)	15 (1.0)	50 (3.5)
Note: Optional enclosure factory installed. To order, change O to PC.			
Example: A1F-PC-SS-1-1			