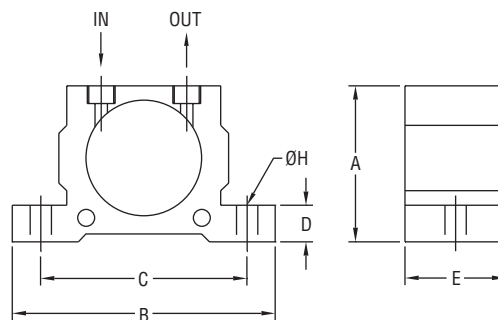




Series PTV Pneumatic Turbine Vibrator

Specifications - Installation and Operating Instructions



Model	A	B	C	D	E	H	Connection
PTV-1	2.01" (51 mm)	3.39" (86 mm)	2.68" (68 mm)	0.47" (12 mm)	1.30" (33 mm)	0.28" (ø7 mm)	1/8"
PTV-2	2.64" (67 mm)	4.45" (113 mm)	3.54" (90 mm)	0.63" (16 mm)	1.65" (42 mm)	0.35" (ø9 mm)	1/4"
PTV-3	2.64" (67 mm)	4.45" (113 mm)	3.54" (90 mm)	0.63" (16 mm)	1.65" (42 mm)	0.35" (ø9 mm)	1/4"
PTV-4	3.27" (83 mm)	5.04" (128 mm)	4.09" (104 mm)	0.63" (16 mm)	2.20" (56 mm)	0.35" (ø9 mm)	1/4"
PTV-5	3.27" (83 mm)	5.08" (129 mm)	4.09" (104 mm)	0.63" (16 mm)	2.20" (56 mm)	0.35" (ø9 mm)	1/4"
PTV-6	4.06" (103 mm)	6.31" (160 mm)	5.13" (130 mm)	0.80" (20 mm)	2.88" (73 mm)	0.44" (Ø11 mm)	3/8"

PTV Series Pneumatic Turbine Vibrators

- Aluminum body allows low noise and high vibration frequency
- Small in size and light-weight
- Sudden power on/off is allowed
- Frequency and amplitude of vibration can be adjusted as required

Series PTV Pneumatic Turbine Vibrators are the best choice of high vibration frequency types for a low noise environment. It is usually installed on a vibrating separator, conveyor, automatic arrangement machine, packing machine, or filling machine.

HOW IT OPERATES

The vibration is produced by centrifugal force which arises from the imbalance of movement when compressed air impacts the tangent of the turbine to make it move. The operation noise is low because of ball bearing supports on the running turbine.

SPECIFICATIONS

Temperature Limit: : 212°F (100°C).

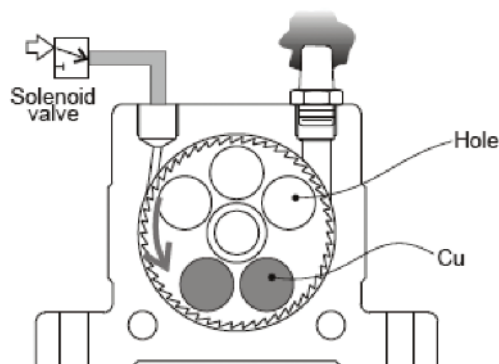
Noise Level: 60-75 dBA.

Supply Pressure: 29 to 87 psi (2 to 6 bar).

Air Consumption: See model chart.

Air Connection: 1/8" BSPT female with 1/4" OD push to connect adapter on PTV-1. 1/4" BSPT female with 1/4" OD push to connect adapter on PTV-2, PTV-3, PTV-4, and PTV-5. 3/8" BSPT female with 3/8" OD push to connect adapter on PTV-6. Also includes muffler for exhaust port.

Housing Material: Aluminum.



Model	Frequency (V.P.M.) Pressure Input			Force lbf (N) Pressure Input			Air Consumption cfm (l/min) Pressure Input			Weight lb (kg)
	29 psi (2 bar)	58 psi (4 bar)	87 psi (6 bar)	29 psi (2 bar)	58 psi (4 bar)	87 psi (6 bar)	29 psi (2 bar)	58 psi (4 bar)	87 psi (6 bar)	
PTV-1	27500	35000	37500	189 (840)	312 (1390)	540 (2400)	1.62 (46)	2.83 (80)	4.0 (112)	.56 (0.26)
PTV-2	26000	30000	33000	315 (1400)	549 (2440)	839 (3730)	4.24 (120)	7.06 (200)	10.2 (290)	1.25 (0.57)
PTV-3	17000	21500	24000	274 (1220)	470 (2090)	710 (3160)	4.24 (120)	7.06 (200)	10.2 (290)	1.28 (0.58)
PTV-4	17000	20000	23000	488 (2170)	908 (4040)	1241 (5520)	6.53 (185)	11.5 (325)	16.1 (455)	2.4 (1.1)
PTV-5	12000	15500	17000	477 (2120)	789 (3510)	1140 (5070)	6.53 (185)	11.5 (325)	16.1 (455)	2.4 (1.1)
PTV-6	13000	14000	16000	760 (3380)	1221 (5430)	1695 (7540)	11.65 (330)	18.71 (530)	26.3 (745)	4.8 (2.2)

V.P.M. = vibrations per minute

