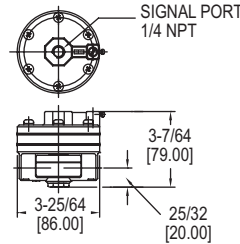
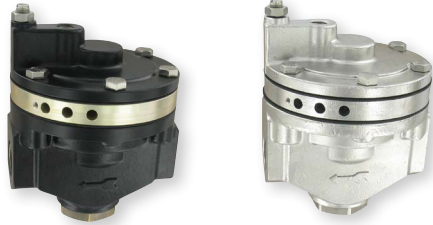




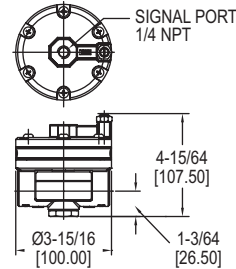
SERIES VB | PROXIMITY® BY DWYER

VOLUME BOOSTERS

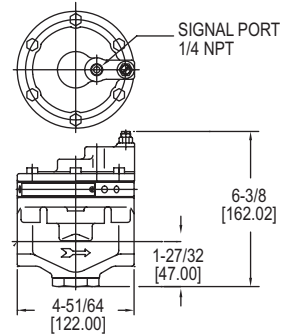
Economical, 1:1 Ratio



VB-01



VB-02



VB-03

The **Series VB Volume Boosters** are a one to one signal to output relay and an ideal solution to increasing valve stroke speed. A large input signal change to the booster delivers high volume for quick throttling control. Volume booster responds to the slightest changes in input signal, which in turn increases accuracy of the output of air pressure to the actuator. This booster receives the positioner's signal output and supplies the proper air pressure to the actuator to reduce response and adjustment time. Available in aluminum or stainless steel.

FEATURES/BENEFITS

- Responds to the slightest change in input signal
- Supplies constant air pressure at a 1:1 ratio

APPLICATIONS

- Used with pneumatic control valves

SPECIFICATIONS

Service: Air only.

Wetted Materials: Body: Aluminum or SS; Diaphragm: Nitrile elastomer.

Max Supply Pressure: 145 psi (10 bar).

Max Signal/Output Pressure: 101.5 psi (7 bar).

Signal Connection: 1/4" NPT.

In/Output Pressure Ratio: 1:1.

Temperature Limits: -4 to 158°F (-20 to 70°C).

Linearity: ±1% FS.

In/Output Connection: See model chart.

Weight: See model chart.

MODEL CHART

Model	Cv	Weight	In/Out Connection	Construction	Price
VB-01	1.02	1.1 lb (0.5 kg)	1/4" NPT	Aluminum	\$176.00 [ⓑ]
VB-01SS	1.02	2.9 lb (1.3 kg)	1/4" NPT	SS	\$915.00 [ⓑ]
VB-02	2.32	1.7 lb (0.76 kg)	1/2" NPT	Aluminum	\$573.00 [ⓑ]
VB-02SS	2.32	4.2 lb (1.9 kg)	1/2" NPT	SS	\$1144.00 [ⓑ]
VB-03	4.98	5.1 lb (2.3 kg)	3/4" NPT	Aluminum	\$807.00 [ⓑ]
VB-03SS	4.98	11 lb (5 kg)	3/4" NPT	SS	\$1288.00 [ⓑ]

[ⓑ] Items are subject to Schedule B discounts.