



PANEL METERS Displays

SERIES	SPPM2	SPPM	DPM	DPMX	LCI132	PM	LPI/BPI	BGM
Display	Graphical full color TFT	Graphical full color TFT	3-1/2 digit, or 4-1/2 digit, 7 segment backlit LCD (Amber, Green or Red)	3-1/2 digit, 7 segment backlit LCD (Red)	4 digit, 7 segment LED (Red)	2 - 6 digit, 7 segment LED (Red)	4 digit LCD or LED	4 digit LED (Red) plus 31 segment bar
Panel Size	4.3" diag.	2.4", 2.8", 3.5" diag.	2-3/8" by 1-1/8"	10-19/32" by 4-5/32"	1/32 DIN	1/8 DIN	Stand alone	5.125" by 1.3"
Display Units	User defined	User defined	None, °F, °C, %, psi, V, A, KW, PF	None	None	User defined	None	Consult factory
Input Signal	4 analog (0 to 50 mA, or 0 to 40 VDC), 8 digital I/O	0 to 50 mA, or 0 to 40 VDC	4 to 20 mA, 0 to 200 mVDC, 0 to 5 VDC, 0 to 10 VDC	4 to 20 mA, 0 to 200 mVDC, 0 to 5 VDC, 0 to 10 VDC	V (DC), mA (DC) or V (AC), A (AC/DC)	mA, V DC, Pulse, Open Collector, NPN, PNP, Switch Contact	4 to 20 mA, Thermocouple, or RTD	4 to 20 mA, 0 to 5 VDC, or 0 to 10 VDC
Output	2 digital I/O, 4 PWM	None	None	None	None	None, 4 to 20mA, or Relay	None	None or 2-SPST relay

SWITCHES & TRANSFORMERS Current Sensors

SERIES	SCS	MCS	CCS	MSCS	SSCS	CCT40/50	CCT60/70
Type	Current switch	Miniature switch	Current switch	Miniature switch	Current switch with set-point based on motor HP	Current transformer	Current transformer
Case	Solid or split core	Solid core or terminal	Solid or split core	Split core	Split core	Solid or split core	Solid or split core
Range	0.15 A to 200 A	0.5 to 50 A or 0.01 to 1 A	0.5 to 200 A	0.15 to 60 A (0.15 A fixed set-point)	1 to 100 HP	10/20/50 A or 100/150/200 A	10/20/50 A or 100/150/200 A
Output	1 A @ 30 VAC/DC NO Solid State Output; Optional 10 A @ 260 VAC (5 A @ 30 VDC) SPST relay	0.3 A @ 130 VAC/DC NO output	0.3 A @ 135 VAC/DC NO output or 1 A @ 240 VAC NO output	1 A @ 30 VAC/DC NO solid state output	1 A @ 30 VAC/DC NO Solid State Output; Optional 10 A @ 260 VAC (5 A @ 30 VDC) SPST relay	0 to 5 VDC, 0 to 10 VDC, or 4 to 20 mA	4 to 20 mA, true RMS



POWER SUPPLIES & TRANSFORMERS

Power Converters



SERIES	APT	A-700	BPS	SCD-PS
Input Voltage	24 VAC, 120 VAC, 240 VAC, 120/208/240/277 VAC, 120/208/240/277/480 VAC, 50/60 Hz	100/120/220/230/240 VAC ±10%. 47 to 63 Hz	24 VAC/VDC 50/60 Hz	120 to 240 VAC/VDC, 50/60 Hz
Output Voltage	24 VAC	24 to 28 VDC regulated	1.5 to 27 VDC (full wave rectified and regulated) adjustable 1.5 to 29 VDC	24 VDC ±3%
Output Current	20, 40, 75, 100, 150 VA	Options from 0.5 A to 4.8 A	0.5 A or 1.5 A	1 A

POWDER, BULK, DUST COLLECTION, AND PNEUMATIC CONVEYING SENSORS

Particulate Sensors

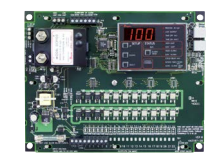
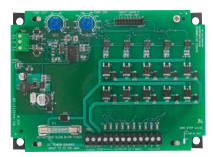
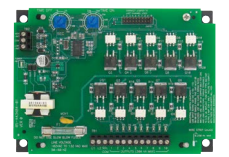


SERIES	PMT2	PMS
Wetted Materials	316L SS, silicone, and PTFE	316 SS and PFA or 316 SS and ceramic
Process Temperature Limit	-40 to 248°F (-40 to 120°C)	250°F (121°C), 450°F (232°C), 800°F (426°C), or 1200°F (649°C)
Pressure Limit	30 psi	10 or 100 psi
Output	4 to 20 mA	µA



DUST COLLECTOR PULSE VALVE CONTROLLERS

Timers



SERIES	DCT500A	DCT500ADC	DCT600	DCT1000	DCT1000DC	SVT
Output Channels	4, 6, or 10	4, 6, or 10	4, 6, 10, 22, or 32	6, 10, or 22; up to 255 with expansion board	6, 10, or 22; up to 255 with expansion board	2, 3, 4, 5, or 6; up to 60 with expansion board. Housing includes pilot solenoid valves
Input	Dry contact	Dry contact	Dry contact	Dry contact or integral pressure sensor	Dry contact or integral pressure sensor	Dry contact
Power	102 to 132 VAC	10 to 35 VDC	85 to 270 VAC	85 to 270 VAC	10 to 30 VDC	90 to 240 VAC or 24 VAC/DC
Size	4-7/8" by 6-3/4"	4-7/8" by 6-3/4"	4-7/8" by 6-3/4" or 6-7/8" by 8-3/4"	6-7/8" by 8-3/4"	6-7/8" by 8-3/4"	See catalog page
Approvals	CE, cULus	CE	CE, cULus	cULus	CE	CE