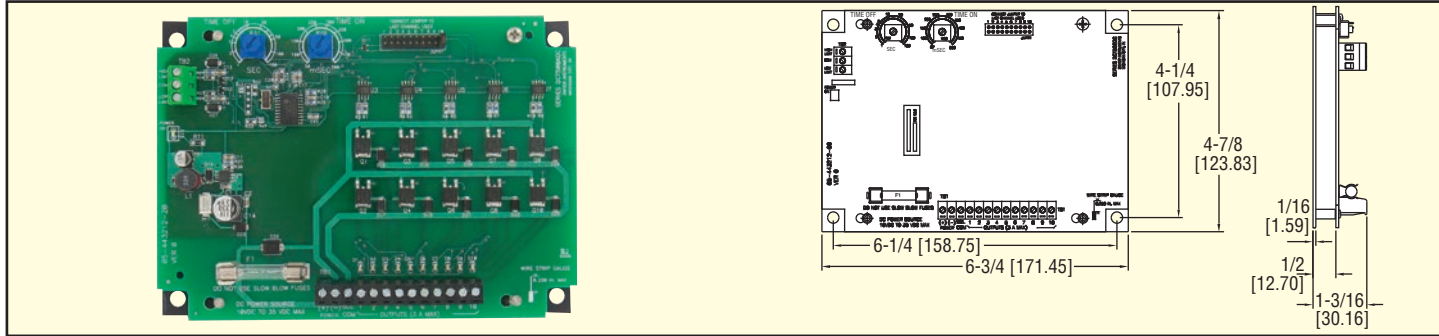




Series
DCT500ADC

Low Cost Timer Controller

For Low Voltage Applications



Ideal for pneumatic conveying systems, the Series DCT500ADC Low Cost Timer Controller is designed to provide continuous or on-demand cleaning for 10-35 volt powered receivers and pulse jet systems. Available in either 4, 6 or 10 channels, each unit is the same size, minimizing enclosure space and reducing overall system installation cost.

The DCT500ADC is simple and easy to use. Time-On and Time-Off settings are selected using two potentiometers. High Limit and Low Limit control inputs are provided for use with on demand systems.

For added safety, the control circuitry including the control inputs are isolated from the line voltage.

To meet your system requirements, an optional weatherproof enclosure is available. For on demand systems, a Dwyer Series A3000 Photohelic® gage or Series 1800 Pressure Switch can be used with the DCT500ADC.

Model	Description	No. of Channels
DCT504ADC	Timer Controller	4
DCT506ADC	Timer Controller	6
DCT510ADC	Timer Controller	10

SPECIFICATIONS*

Output Channels: 4, 6, & 10 channels.

Power Requirements: 10 to 35 VDC.

Power Consumption: 0.6 W.

Solenoid Supply: 3 A max per channel.

Fuse: Type 3 AG, 3 A @ 250 VAC.

Temperature Limits: -40 to 140°F (-40 to 60°C).

Storage Temperature Limits:

-40 to 176°F (-40 to 80°C).

On Time: 50 ms to 500 ms.

On Time Accuracy: ±10 ms.

On Time Stability: < ±1 ms.

Off Time: 1 s to 180 s.

Off Time Accuracy: ±5% of setting.

Weight: 9 oz (255 g).

Agency Approval: CE.

*Additional specifications on IOM.

OPTIONS

L, Mounting Bracket for Field Retrofits:

8-1/4" x 6-1/4" (209.55 mm x 158.75 mm)

WP, Weatherproof Housing:

Standard Models

Models with Option -L Mounting Bracket