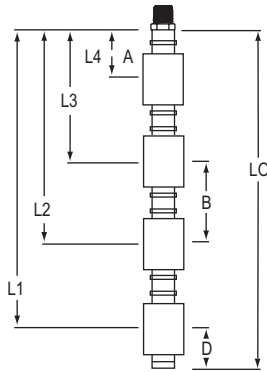
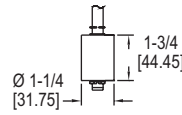


QUICK-SHIP MULTI-STATION LEVEL SWITCH

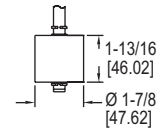
Fast Delivery, Customized, Up to Four Actuation Levels



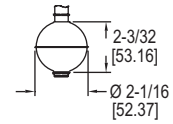
ACTUATION LEVELS		
A	B	D
1-1/2" (38.10 mm)	3" (76.20 mm)	2" (50.80 mm)
Each switching point requires one float.		
A=Minimum distance from actuation point to bottom of mounting		
B=Minimum distance between actuation levels		
D=Minimum distance from end of unit to lowest actuation point		



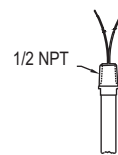
F1 float dimensions



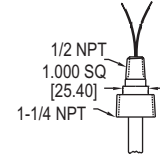
F2 float dimensions



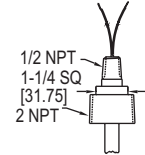
F3 float dimensions



Type 1 mounting dimensions



Type 2 mounting dimensions



Type 3 mounting dimensions

The Series F7-MQ Quick-Ship Multi-Station Level Switch provides a customized level switch to meet application requirements. Switches can be configured with up to four different control points and stem lengths up to 72" (1.82 m). Stems and floats are available in 316 SS or brass, SPST or SPDT switches, and choice of mountings.

FEATURES/BENEFITS

- Customized level indication quickly and affordably
- Rugged construction with multiple options yielding exceptional versatility
- Capable of supporting larger, more buoyant floats
- Durable construction asserts long reliability in contaminated or turbulent media

APPLICATIONS

- Water level monitoring
- Oil level control
- Tank level control
- Diesel level monitoring

SPECIFICATIONS

Service: Compatible liquids.
Temperature Limits: F1 and F2 with water: 0 to 180°F (-18 to 82°C); Oil: -40 to 230°F (-40 to 110°C); F3: -40 to 300°F (-40 to 149°C).
Electrical Connections: 24" (61 cm) free leads; #22 AWG TFE and #18 AWG polymeric.
Mounting Orientation: Vertical ±30°.

MODEL CHART

Example	F7-MQ	B	1	-4	F3	3	-07.00	-11.00	-15.00	-20.00	-24.00	J	F7-MQB1-4F33-07.00-11.00-15.00-20.00-24.00-J												
Construction	F7-MQ												Multi-station level, 1 to 4 switch points												
Stem & Connection Material		B S											Brass with beryllium copper stops 316 SS with SS ARMCO PH-15-7MO stops												
Connection Type			1 2 3										1/2" NPT (float F2, F3 only) 1-1/4" NPT (float F1 only) 2" NPT (float F2, F3 only)												
Switch Points				#									Put 1 to 4 for the number of switch points desired												
Float Type					F1 F2 F3								<table border="1"> <thead> <tr> <th>Material</th> <th>Min. s.g.</th> <th>Max. Pressure</th> </tr> </thead> <tbody> <tr> <td>Buna-N</td> <td>0.75</td> <td>150 psi (10.3 bar)</td> </tr> <tr> <td>Buna-N</td> <td>0.55</td> <td>150 psi (10.3 bar)</td> </tr> <tr> <td>316 SS</td> <td>0.75</td> <td>750 psi (51.7 bar)</td> </tr> </tbody> </table>	Material	Min. s.g.	Max. Pressure	Buna-N	0.75	150 psi (10.3 bar)	Buna-N	0.55	150 psi (10.3 bar)	316 SS	0.75	750 psi (51.7 bar)
Material	Min. s.g.	Max. Pressure																							
Buna-N	0.75	150 psi (10.3 bar)																							
Buna-N	0.55	150 psi (10.3 bar)																							
316 SS	0.75	750 psi (51.7 bar)																							
Switch Type*					1 3								SPST, .17 A @ 120 VAC, .08 A @ 240 VAC, .13 A @ 120 VDC, .06 A @ 240 VDC SPDT, .17 A @ 120 VAC, .08 A @ 240 VAC, .13 A @ 120 VDC, .06 A @ 240 VDC												
Set Point Distance, L4†						00.00							In inches referenced from bottom of process connection												
Set Point Distance, L3†							00.00						In inches referenced from bottom of process connection												
Set Point Distance, L2†								00.00					In inches referenced from bottom of process connection												
Set Point Distance, L1†									00.00				In inches referenced from bottom of process connection												
Overall Length, L0										00.00			Min. length is L1+D; Max. length with connection length is 72" (1.82 m)												
Options												J	Junction box for wire leads, NEMA 4 (not available with connection type 1)												

NO switch is standard. For NC place an "" after the corresponding set point distance in the model number.
 †No numbers needed beyond the number of switches specified.
Note: Models are built to your specifications