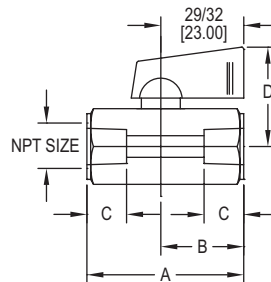
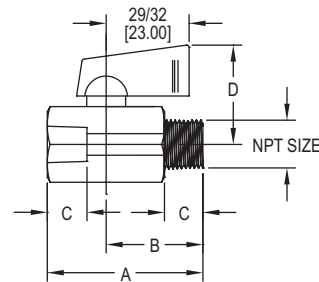


MINI STAINLESS STEEL BALL VALVE

Economical, Wide Chemical Compatibility, Compact



Female X female connection
SMV2-WFX



Male X female connection
SMV2-WMX

The **Series SMV2 Mini Stainless Steel Ball Valve** is ideal for small, confined spaces, where larger valves are unsuitable. The 316 SS and PTFE wetted materials are excellent for applications with corrosive media. The handles are made of a rigid nylon for extended durability. Installation is made easy with a choice of FxF or MxF process connections. PTFE ball seats provide broad media compatibility and bubble tight shutoff.

FEATURES/BENEFITS

- High working pressure
- Abrasion resistant
- Easy to install
- Economical
- Wide chemical compatibility

APPLICATIONS

- Gas or liquid flow control
- Ideal for small, confined spaces

SPECIFICATIONS	
<p>Service: Gases and liquids compatible with wetted materials. Not rated for steam use.</p> <p>End Connections: NPT, see model chart.</p> <p>Pressure Limits: 1/8" to 3/8", 1000 psi (68.9 bar) WOG; 1/2", 800 psi (51.1 bar) WOG.</p>	<p>Temperature Limits: 212°F (100°C) maximum.</p> <p>Wetted Materials: Valve body: Cast 316 SS (CF8M); Valve ball, insert and stem: 316 SS; Ball seat: PTFE.</p> <p>Agency Approvals: Meets the technical requirements of EU Directive 2011/65/EU (RoHS II).</p>

MODEL CHART				
Pipe Size	Female x Female Model	Price	Male x Female Model	Price
1/8"	SMV2-WF1	\$17.00 ^(B)	SMV2-WM1	\$19.00 ^(B)
1/4"	SMV2-WF2	17.00 ^(B)	SMV2-WM2	19.00 ^(B)
3/8"	SMV2-WF3	17.25 ^(B)	SMV2-WM3	19.50 ^(B)
1/2"	SMV2-WF4	20.50 ^(B)	SMV2-WM4	22.25 ^(B)

^(B) Items are subject to Schedule B discounts.