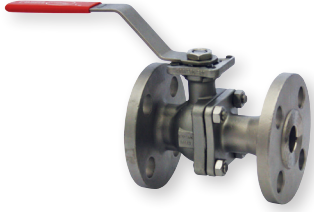
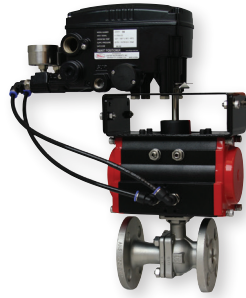


# 2-PIECE FLANGED STAINLESS STEEL V-BALL VALVES

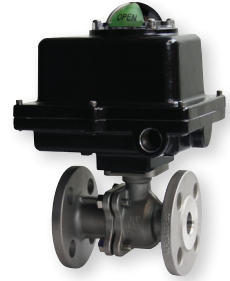
## 150# ANSI Flange, V-Ball, Electric or Pneumatic Actuators



WE07-DHD00-T



WE07-DDA01-T-NN09



WE07-CTI01-T-A



WE07-DDA01-T-AA03



WE07-DTD01-T-A



The **Series WE07 2-Piece Flanged Stainless Steel V-Ball Valves** incorporate a V-port ball valve for impressive flow rates with minimal pressure drop. Quarter turn control ball valves are compact, lighter weight and much less expensive than comparable sized globe valves and segmented control valves. They also offer bubble tight shut off with zero leakage and can withstand high pressure drops. The 60° and 90° balls offer an equal percentage flow characteristic. W. E. Anderson's V-port ball valves have been designed to offer maximum flow characteristics that are substantially higher than comparably sized globe valves. The natural flow pattern of ball valves increases flow rates and in many applications valves smaller than pipeline size can be used.

The Series WE07 can be configured with an electric or pneumatic actuator. Electric actuators are available in weatherproof or explosion-proof, a variety of supply voltages and two-position or modulating control.

Two-position actuators use the supply voltage to drive the valve open or close, while the modulating actuator accepts a 4-20 mA input for valve positioning. Actuators feature thermal overload protection and a permanently lubricated gear train.

The pneumatic double acting actuator uses an air supply to drive the valve open and closed. The actuator has two supply ports with one driving the valve open and the other driving the valve closed. Spring return pneumatic actuators use the air supply to open the valve and internally loaded springs return the valve to the closed position. Also available is the SV3 solenoid valve to electrically switch the air supply pressure between the air supply ports for opening and closing the valve.

### FEATURES/BENEFITS

- The 60° and 90° balls offer an equal percentage flow characteristic
- Bubble tight shut off at high pressure drops
- Limit switches can be mounted to manual valves for remote monitoring
- Available with a variety of electric and pneumatic actuators

### APPLICATIONS

- Gas or liquid flow control

### SPECIFICATIONS

#### VALVE

**Service:** Compatible liquids and gases.

**Body:** 2-piece.

**Line Sizes:** 1/2 to 3".

**End Connections:** 150# ANSI flange.

**Pressure Limits:** 20" Hg to 275 psi (-0.7 to 19 bar) up to 392°F.

**Wetted Materials:** Body and ball: 316 SS (CF8M); Stem: 316 SS; Seat: RTFE/PTFE; Seal, washer, and packing: PTFE.

**Temperature Limits:** -20 to 392°F (-29 to 200°C).

**Other Materials:** O-ring: Fluoroelastomer; Handle: 304 SS; Washer: 301 SS; Stem nut, Locking device, Gland ring: 304 SS; Handle sleeve: PVC.

**Agency Approvals:** Meets the technical requirements of EU Directive 2011/65/ EU (RoHS II).

#### ACTUATORS

##### Pneumatic "DA" and "SR" Series

**Type:** DA series is double acting and SR series is spring return (rack and pinion).

**Normal Supply Pressure:** DA: 40 to 115 psi (2.7 to 7.9 bar); SR: 80 psi (5.5 bar).

**Maximum Supply Pressure:** 120 psi (8.6 bar).

**Air Connections:** DA01: 1/8" female NPT; DA02 to DA04: 1/4" female NPT; SR02 to SR06: 1/4" female NPT.

**Housing Material:** Anodized aluminum body and epoxy coated aluminum end caps.

**Temperature Limits:** -40 to 176°F (-40 to 80°C).

**Accessory Mounting:** NAMUR standard.

##### Electric "TD" and "MD" Series

**Power Requirements:** 110 VAC, 220 VAC, 24 VAC or 24 VDC (MD models not available in 24 VDC).

**Power Consumption:** See instruction manual.

**Cycle Time (per 90°):** TD01: 4 s; MD01: 10 s; TD02 and MD02: 20 s; TD03 and MD03: 30 s.

**Duty Rating:** 85%.

**Enclosure Rating:** NEMA 4X (IP67).  
**Housing Material:** Powder coated aluminum.

**Temperature Limits:** -22 to 140°F (-30 to 60°C).

**Electrical Connection:** 1/2" female NPT.

**Modulating Input:** 4-20 mA.

**Standard Features:** Manual override, position indicator, and TD models come with two limit switches.

##### Electric "TI" and "MI" Series

**Power Requirements:** 110 VAC, 220 VAC, 24 VAC or 24 VDC.

**Power Consumption:** See instruction manual.

**Cycle Time (per 90°):** See instruction manual.

**Duty Rating:** See instruction manual.

**Enclosure Rating:** NEMA 7, designed to meet hazardous locations: Class I, Group C & D; Class II, Group E, F & G; Division I & II.

**Housing Material:** Powder coated aluminum.

**Temperature Limits:** -40 to 140°F (-40 to 60°C).

**Electrical Connection:** 1/2" female NPT.

**Modulating Input:** 4-20 mA.

**Standard Features:** Position indicator and two limit switches.

# 2-PIECE FLANGED STAINLESS STEEL V-BALL VALVES

150# ANSI Flange, V-Ball, Electric or Pneumatic Actuators

MODEL CHART												
Size	Cv (gal/min)		Popular Hand Operated Model	Price	Popular Double Acting Pneumatic Model	Price	Popular Spring Return Pneumatic Model	Price	Popular NEMA 4X Two Position Electric (110 VAC) Model	Price	Popular NEMA 4X Modulating Electric (110 VAC) Model	Price
	60°	90°										
1/2"	7.9	9.1	WE07-CHD00-T	\$131.00 <sup>(B)</sup>	WE07-CDA01-T	\$315.00 <sup>(B)</sup>	WE07-CSR02-T	\$380.00 <sup>(B)</sup>	WE07-CTD01-T-A	\$624.00 <sup>(B)</sup>	WE07-CMD01-T-A	\$1138.00 <sup>(B)</sup>
3/4"	13.6	14.2	WE07-DHD00-T	153.00 <sup>(B)</sup>	WE07-DDA01-T	326.00 <sup>(B)</sup>	WE07-DSR02-T	407.00 <sup>(B)</sup>	WE07-DTD01-T-A	678.00 <sup>(B)</sup>	WE07-DMD01-T-A	1191.00 <sup>(B)</sup>
1"	22.3	29.1	WE07-EHD00-T	200.00 <sup>(B)</sup>	WE07-EDA03-T	407.00 <sup>(B)</sup>	WE07-ESR03-T	488.00 <sup>(B)</sup>	WE07-ETD01-T-A	732.00 <sup>(B)</sup>	WE07-EMD01-T-A	1300.00 <sup>(B)</sup>
1-1/2"	46.2	75.5	WE07-GHD00-T	370.00 <sup>(B)</sup>	WE07-GDA03-T	597.00 <sup>(B)</sup>	WE07-GSR04-T	624.00 <sup>(B)</sup>	WE07-GTD02-T-A	964.00 <sup>(B)</sup>	WE07-GMD01-T-A	1408.00 <sup>(B)</sup>
2"	104.7	138.4	WE07-HHD00-T	513.00 <sup>(B)</sup>	WE07-HDA03-T	758.00 <sup>(B)</sup>	WE07-HSR05-T	846.00 <sup>(B)</sup>	WE07-HTD02-T-A	1191.00 <sup>(B)</sup>	WE07-HMD02-T-A	1516.00 <sup>(B)</sup>
2-1/2"	147.5	220.3	WE07-IHD00-T	824.00 <sup>(B)</sup>	WE07-IDA04-T	1083.00 <sup>(B)</sup>	WE07-ISR06-T	1300.00 <sup>(B)</sup>	WE07-ITD03-T-A	1462.00 <sup>(B)</sup>	WE07-IMD03-T-A	1841.00 <sup>(B)</sup>
3"	209.1	308.3	WE07-JHD00-T	1040.00 <sup>(B)</sup>	WE07-JDA04-T	1408.00 <sup>(B)</sup>	WE07-JSR06-T	1598.00 <sup>(B)</sup>	WE07-JTD03-T-A	1732.00 <sup>(B)</sup>	WE07-JMD03-T-A	2057.00 <sup>(B)</sup>

<sup>(B)</sup> Items are subject to Schedule B discounts.

MODEL CHART - HAND OPERATED & PNEUMATIC ACTUATOR										
Example	WE07	-CSR02	-T	-N	N	09	WE07-CSR02-T-NN09	Price		
Series	WE07						316 SS 2-piece 150# ANSI flange	-		
Size and Actuator		CHD00					1/2" hand operated	\$131.00 <sup>(B)</sup>		
		DHD00					3/4" hand operated	153.00 <sup>(B)</sup>		
		EHD00					1" hand operated	200.00 <sup>(B)</sup>		
		GHD00					1-1/2" hand operated	370.00 <sup>(B)</sup>		
		HHD00					2" hand operated	513.00 <sup>(B)</sup>		
		IHD00					2-1/2" hand operated	824.00 <sup>(B)</sup>		
		JHD00					3" hand operated	1040.00 <sup>(B)</sup>		
		CDA01					1/2" double acting	315.00 <sup>(B)</sup>		
		DDA01					3/4" double acting	326.00 <sup>(B)</sup>		
		EDA03					1" double acting	407.00 <sup>(B)</sup>		
		GDA03					1-1/2" double acting	597.00 <sup>(B)</sup>		
		HDA03					2" double acting	758.00 <sup>(B)</sup>		
		IDA04					2-1/2" double acting	1083.00 <sup>(B)</sup>		
		JDA04					3" double acting	1408.00 <sup>(B)</sup>		
		CSR02					1/2" spring return	380.00 <sup>(B)</sup>		
		DSR02					3/4" spring return	407.00 <sup>(B)</sup>		
	ESR03					1" spring return	488.00 <sup>(B)</sup>			
	GSR04					1-1/2" spring return	624.00 <sup>(B)</sup>			
	HSR05					2" spring return	846.00 <sup>(B)</sup>			
	ISR06					2-1/2" spring return	1300.00 <sup>(B)</sup>			
	JSR06					3" spring return	1598.00 <sup>(B)</sup>			
V-Ball Angle				T			60° v-ball	-		
				N			90° v-ball	-		
Solenoid					N		No solenoid	-		
					A		NEMA 4X NAMUR solenoid	+55.00 <sup>(B)</sup>		
Solenoid Voltage					N		No solenoid	-		
					A		120 VAC	-		
					B		220 VAC	-		
					C		24 VAC	-		
					D		24 VDC	-		
					E		12 VDC	-		
Positioner and Switches						00	None	-		
						01	42AD0 exp limit switch	+250.00 <sup>(B)</sup>		
						02	45VD0 exp position transmitter	+570.00 <sup>(B)</sup>		
						03	42AD0-B ATEX limit switch	+350.00 <sup>(B)</sup>		
						04	42AD0-IE IECEX limit switch	+347.00 <sup>(B)</sup>		
						06	QV-210101 poly limit switch	+157.00 <sup>(B)</sup>		
						07	VPS and P1 prox switch	+224.00 <sup>(B)</sup>		
						08	265ER-D5 positioner	+693.00 <sup>(B)</sup>		
						09	285ER-D5 smart positioner	+1624.00 <sup>(B)</sup>		
Options						NO	Fail open spring return actuator	-		

<sup>(B)</sup> Items are subject to Schedule B discounts.

ACCESSORIES		
Model	Description	Price
AFR4	Air filter regulator 0 to 120 psi	\$73.50 <sup>(B)</sup>
VB-01	Volume booster	288.00 <sup>(B)</sup>

<sup>(B)</sup> Items are subject to Schedule B discounts.

MODEL CHART - ELECTRIC ACTUATOR									
Example	WE07	-ETD01	-T	-B	WE07-ETD01-T-B	Price			
Series	WE07				316 SS 2-piece 150# ANSI flange	-			
Size and Actuator		CTD01			1/2" NEMA 4X two-position	\$624.00 <sup>(B)</sup>			
		DTD01			3/4" NEMA 4X two-position	678.00 <sup>(B)</sup>			
		ETD01			1" NEMA 4X two-position	732.00 <sup>(B)</sup>			
		GTD02			1-1/2" NEMA 4X two-position	964.00 <sup>(B)</sup>			
		HTD02			2" NEMA 4X two-position	1191.00 <sup>(B)</sup>			
		ITD03			2-1/2" NEMA 4X two-position	1462.00 <sup>(B)</sup>			
		JTD03			3" NEMA 4X two-position	1732.00 <sup>(B)</sup>			
		CMD01			1/2" NEMA 4X modulating	1138.00 <sup>(B)</sup>			
		DMD01			3/4" NEMA 4X modulating	1191.00 <sup>(B)</sup>			
		EMD01			1" NEMA 4X modulating	1300.00 <sup>(B)</sup>			
		GMD01			1-1/2" NEMA 4X modulating	1408.00 <sup>(B)</sup>			
		HMD02			2" NEMA 4X modulating	1516.00 <sup>(B)</sup>			
		IMD03			2-1/2" NEMA 4X modulating	1841.00 <sup>(B)</sup>			
		JMD03			3" NEMA 4X modulating	2057.00 <sup>(B)</sup>			
		CTI01			1/2" exp two-position	1191.00 <sup>(B)</sup>			
		DTI01			3/4" exp two-position	1246.00 <sup>(B)</sup>			
		ETI02			1" exp two-position	1462.00 <sup>(B)</sup>			
		GTI03			1-1/2" exp two-position	1841.00 <sup>(B)</sup>			
		HTI04			2" exp two-position	2273.00 <sup>(B)</sup>			
		ITI04			2-1/2" exp two-position	2490.00 <sup>(B)</sup>			
	JTI05			3" exp two-position	3139.00 <sup>(B)</sup>				
	CMI01			1/2" exp electric modulating	2273.00 <sup>(B)</sup>				
	DMI01			3/4" exp electric modulating	2273.00 <sup>(B)</sup>				
	EMI02			1" exp electric modulating	2490.00 <sup>(B)</sup>				
	GMI03			1-1/2" exp electric modulating	2815.00 <sup>(B)</sup>				
	HMI04			2" exp electric modulating	3139.00 <sup>(B)</sup>				
	IMI04			2-1/2" exp electric modulating	3463.00 <sup>(B)</sup>				
	JMI05			3" exp electric modulating	3897.00 <sup>(B)</sup>				
V-Ball Angle				T	60° v-ball	-			
				N	90° v-ball	-			
Actuator Voltage				A	110 VAC	-			
				B	220 VAC	-			
				C	24 VAC	77.00 <sup>(B)</sup>			
				D	24 VDC	77.00 <sup>(B)</sup>			

<sup>(B)</sup> Items are subject to Schedule B discounts.

REPAIR KIT		
Model	Valve Series and Size	Price
VRK-27	WE07-1/2"	\$14.00
VRK-28	WE07-3/4"	14.75
VRK-29	WE07-1"	16.75
VRK-31	WE07-1-1/2"	24.75
VRK-32	WE07-2"	30.00
VRK-33	WE07-2-1/2"	52.00
VRK-34	WE07-3"	57.00

Parts List - Included in Kit	
1	PTFE thrust washer
1	FKM O-ring
2	PTFE stem packing
2	PTFE seals
2	RTFE seats