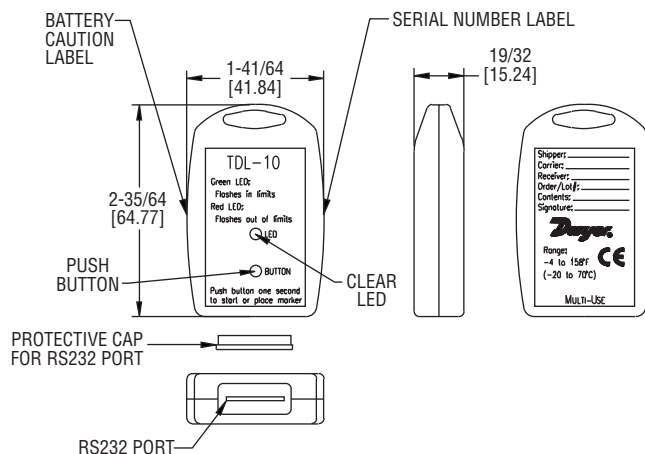




Model TDL-10 Portable Temperature Data Logger

Specifications - Installation and Operating Instructions



The Model TDL-10 is a compact and portable data logger used for recording temperature of goods in-transit. It records a wide temperature range from -4 to 158°F (-20 to 70°C). The data logger features programmable high and low alarms that are indicated with green and red LEDs on the face of the logger. The label on the back of the logger allows for important shipping information to be recorded. The TDL-10 can record over 8,000 measurements, and the easy to use TDL-SC software makes retrieving data simple. The TDL-10 can easily be started and stopped from a PC, delayed to start up to thirty days in advance, or begin to start by a push of a button.

SPECIFICATIONS

Range: -4 to 158°F (-20 to 70°C).

Memory Size: 8,191 readings.

Accuracy: $\pm 0.9^\circ\text{F}$ ($\pm 0.5^\circ\text{C}$) for 14 to 104°F (-10 to 40°C), $\pm 2^\circ\text{F}$ ($\pm 1^\circ\text{C}$) for -4 to 158°F (-20 to 70°C).

Resolution: 0.2°F (0.1°C).

Sampling Method: Stop on memory full.

Sampling Rate: Selectable from 5 sec to 30 min.

Computer Requirements: Windows® 95, Windows® 98, Windows® 2000, Windows® ME, Windows NT®, and Windows® XP operating system, one free USB port.

Power Requirements: Single use, 3 V lithium coin cell battery.

Battery Life: 90 days (approx).

Alarms: Programmable high/low.

Interface: RS232 Series (interface cable required).

Material: ABS plastic.

Weight: 12 oz (340 g).

Agency Approvals: CE.

Windows® and Windows NT® are registered trademarks of Microsoft.

SOFTWARE INSTALLATION

1. Insert installation CD and click Install Dwyer 2.00.



2. Follow onscreen instructions.

CONNECT THE LOGGER

1. Remove the plastic piece from the bottom of the logger.
2. Place the logger on the blue outlined port.
3. Connect the TDL-SC Serial RS232 to the PC.

WAYS TO START LOGGING

Within the Start Device window, there are three ways that the data logger can be set to start logging data. Select Start Device from the Device menu to bring up this window.

By default, the logger is set to start logging by a manual start. To start the logger manually, push the button that is recessed into the face of the logger for three seconds when it is desired that the logger start logging data.

To start automatically or start by a specified delay, choose one of those options within the Start Device window.

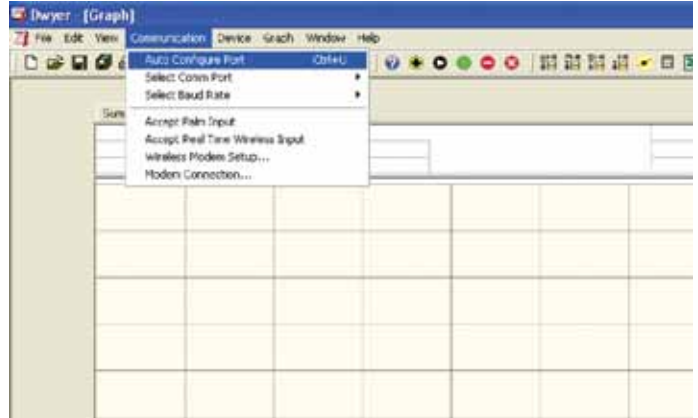
ALARM SETUP

Within the Start Device window, click the Alarm Settings button. Select Start Device from the Device menu to bring up this window. Click the Change button and enter the desired information.

The LED will blink green when it's in a non-alarm state, and once the temperature has crossed an alarm threshold, it will blink red.

START THE LOGGER

1. To start the logger, from the Communication menu select Auto Configure Port.



2. From the Device menu select Start Device and choose the desired Reading Rate, the preferred method for starting the logger, and the alarm settings.
3. Click the Start button.

NOTICE

Starting the device erases all data currently stored in the logger.

4. The logger will stop recording when the device is full or when Stop Device is selected from the Device menu.

DOWNLOAD DATA

1. To download data, connect the logger to the PC.
2. Select Read Device Data from the Device menu.
3. Data is then presented graphically.

**For more detailed information on using the TDL-SC software, please consult the Software Manual.

BATTERIES

Fast logging will considerably shorten the battery life. To preserve battery life, it is recommended to use the longest practical sampling rate, and when the logger is not in use, select Stop Device from the Device menu. Typical battery life is 90 days at 77°F (25°C) with a 5 minute reading rate.

MAINTENANCE

Upon final installation of the Model TDL-10 Data Logger, no routine maintenance is required. The Model TDL-10 is not field serviceable and should be returned if repair is needed (field repair should not be attempted and may void warranty). Be sure to include a brief description of the problem plus any relevant application notes. Contact customer service to receive a Return Goods Authorization number before shipping.